

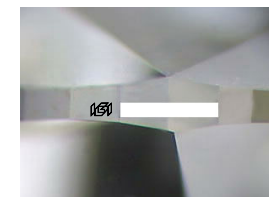
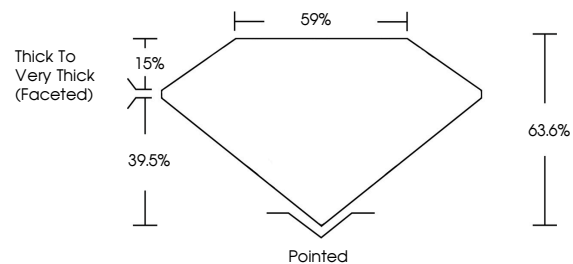


**ELECTRONIC COPY**

Report verification at [igi.org](http://igi.org)

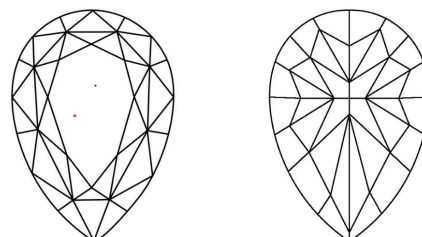
**LABORATORY GROWN DIAMOND REPORT**

**PROPORTIONS**



Sample Image Used

**CLARITY CHARACTERISTICS**



**KEY TO SYMBOLS**

Red symbols indicate internal characteristics.  
Green symbols indicate external characteristics.

**COLOR**

D E F G H I J Faint Very Light Light

**CLARITY**

IF	VS <sup>1-2</sup>	VS <sup>1-2</sup>	SI <sup>1-2</sup>	I <sup>1-3</sup>
Internally Flawless	Very Very Slightly Included	Very Slightly Included	Slightly Included	Included

September 4, 2024

IGI Report Number

Description **LABORATORY GROWN DIAMOND**

Shape and Cutting Style **PEAR MODIFIED BRILLIANT**

Measurements **14.62 X 9.42 X 5.99 MM**

**GRADING RESULTS**

Carat Weight **6.01 CARATS**

Color Grade **FANCY VIVID BROWNISH PINK**

Clarity Grade **VS 1**

September 4, 2024

IGI Report Number

Description **LABORATORY GROWN DIAMOND**

Shape and Cutting Style **PEAR MODIFIED BRILLIANT**

Measurements **14.62 X 9.42 X 5.99 MM**

**GRADING RESULTS**

Carat Weight **6.01 CARATS**

Color Grade **FANCY VIVID BROWNISH PINK**

Clarity Grade **VS 1**

**ADDITIONAL GRADING INFORMATION**

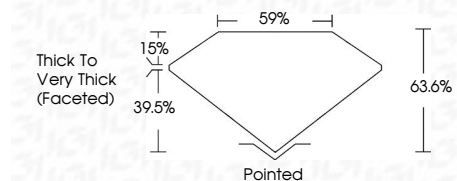
Polish **EXCELLENT**

Symmetry **EXCELLENT**

Fluorescence **SLIGHT**

Inscription(s)

Comments: This Laboratory Grown Diamond was created by Chemical Vapor Deposition (CVD) growth process. Indications of post-growth treatment.



**ADDITIONAL GRADING INFORMATION**

Polish **EXCELLENT**

Symmetry **EXCELLENT**

Fluorescence **SLIGHT**

Inscription(s)

Comments: This Laboratory Grown Diamond was created by Chemical Vapor Deposition (CVD) growth process. Indications of post-growth treatment.



**IGI**



September 4, 2024	6.01 CARATS
IGI Report No	FANCY VIVID BROWNISH PINK
PEAR MODIFIED BRILLIANT	VS 1
14.62 X 9.42 X 5.99 MM	63.6%
Carat Weight	59%
Color Grade	Thick to Very Thick (Faceted)
Clarity Grade	Pointed
Depth	EXCELLENT
Table	EXCELLENT
Grailes	SLIGHT
Culet	
Polish	
Symmetry	
Fluorescence	
Inscription(s)	

Comments: This Laboratory Grown Diamond was created by Chemical Vapor Deposition (CVD) growth process. Indications of post-growth treatment.