



LABORATORY GROWN DIAMOND REPORT

February 9, 2026

IGI Report Number

Description

LABORATORY GROWN DIAMOND

Shape and Cutting Style

OVAL BRILLIANT

Measurements

6.44 X 4.41 X 2.89 MM

GRADING RESULTS

Carat Weight

0.50 CARAT

Color Grade

FANCY INTENSE BROWNISH PINK

Clarity Grade

VS 1

ADDITIONAL GRADING INFORMATION

Polish

VERY GOOD

Symmetry

VERY GOOD

Fluorescence

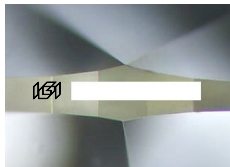
SLIGHT

Inscription(s)

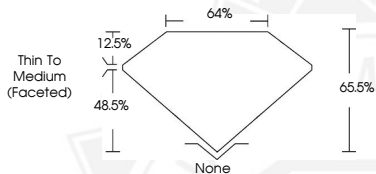


Comments: This Laboratory Grown Diamond was created by Chemical Vapor Deposition (CVD) growth process.

Indications of post-growth treatment.



Sample Image Used



February 9, 2026

IGI Report Number

OVAL BRILLIANT

LABORATORY GROWN DIAMOND

6.44 X 4.41 X 2.89 MM

Carat Weight

0.50 CARAT

Color Grade

**FANCY INTENSE
BROWNISH PINK**

Clarity Grade

VS 1

Polish

VERY GOOD

Symmetry

VERY GOOD

Fluorescence

SLIGHT

Inscription(s)



Comments: This Laboratory Grown Diamond was created by Chemical Vapor Deposition (CVD) growth process. Indications of post-growth treatment.

February 9, 2026

IGI Report Number

OVAL BRILLIANT

LABORATORY GROWN DIAMOND

6.44 X 4.41 X 2.89 MM

Carat Weight

0.50 CARAT

Color Grade

**FANCY INTENSE
BROWNISH PINK**

Clarity Grade

VS 1

Polish

VERY GOOD

Symmetry

VERY GOOD

Fluorescence

SLIGHT

Inscription(s)



Comments: This Laboratory Grown Diamond was created by Chemical Vapor Deposition (CVD) growth process. Indications of post-growth treatment.



THIS DOCUMENT WAS PRODUCED WITH THE FOLLOWING SECURITY MEASURES: SPECIAL DOCUMENT PAPER, INK SCREENS, WATERMARK, BACKGROUND DESIGNS, HOLOGRAM AND OTHER SECURITY FEATURES NOT LISTED AND DO EXCEED DOCUMENT SECURITY INDUSTRY GUIDELINES.