



DIAMOND REPORT

ELECTRONIC COPY



November 9, 2023

IGI Report Number

Description **NATURAL DIAMOND**

Shape and Cutting Style **PEAR BRILLIANT**

Measurements **8.54 x 5.28 x 3.46 mm**

GRADING RESULTS

Carat Weight **1.00 CARAT**

Color Grade **LIGHT GREY**

Clarity Grade **I 1**

Cut Grade **VERY GOOD**

November 9, 2023

IGI Report Number

Description **NATURAL DIAMOND**

Shape and Cutting Style **PEAR BRILLIANT**

Measurements **8.54 x 5.28 x 3.46 mm**

GRADING RESULTS

Carat Weight **1.00 CARAT**

Color Grade **LIGHT GREY**

Clarity Grade **I 1**

Cut Grade **VERY GOOD**

ADDITIONAL GRADING INFORMATION

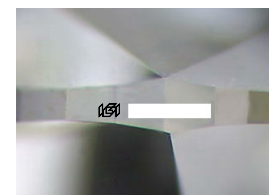
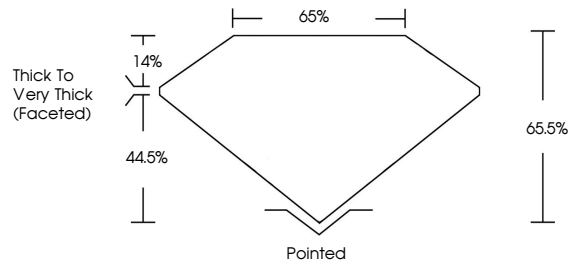
Polish **EXCELLENT**

Symmetry **VERY GOOD**

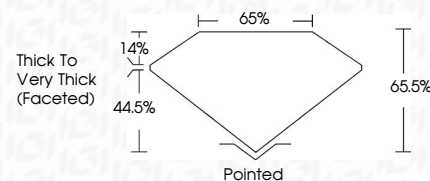
Fluorescence **NONE**

Inscription(s)

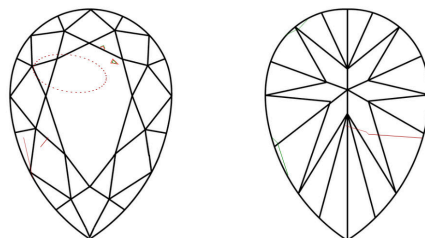
PROPORTIONS



Sample Image Used



CLARITY CHARACTERISTICS



KEY TO SYMBOLS

Red symbols indicate internal characteristics.
Green symbols indicate external characteristics.

COLOR

D - F	G - J	K - M	N - R	S - Z	FANCY
Colorless	Near Colorless	Slightly Tinted	Very Light Color	Light Color	

CLARITY

IF	VS ¹⁻²	VS ¹⁻²	SI ¹⁻²	I ¹⁻³
Internally Flawless	Very Very Slightly Included	Very Slightly Included	Slightly Included	Included

ADDITIONAL GRADING INFORMATION

Polish **EXCELLENT**

Symmetry **VERY GOOD**

Fluorescence **NONE**

Inscription(s)



IGI

November 9, 2023
IGI Report No
NATURAL DIAMOND
PEAR BRILLIANT
8.54 x 5.28 x 3.46 mm
Carat Weight
Color Grade
1.00 CARAT
LIGHT GREY
VERY GOOD
I 1
65.5%
Thick To Very Thick (Faceted)
65%
Pointed
EXCELLENT
VERY GOOD
NONE