



**ELECTRONIC COPY**

Report verification at [igi.org](http://igi.org)

**LABORATORY GROWN DIAMOND REPORT**

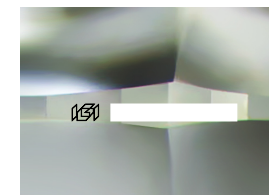
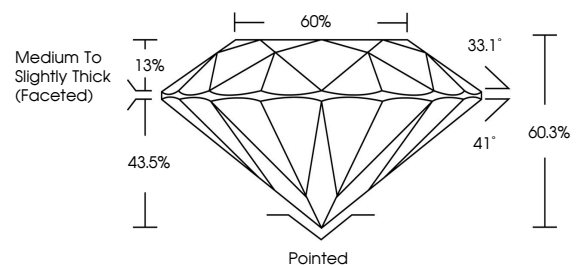
March 16, 2026  
 IGI Report Number  
 Description **LABORATORY GROWN DIAMOND**  
 Shape and Cutting Style **ROUND BRILLIANT**  
 Measurements **8.00 - 8.04 X 4.83 MM**  
**GRADING RESULTS**  
 Carat Weight **1.89 CARAT**  
 Color Grade **D**  
 Clarity Grade **VVS 2**  
 Cut Grade **IDEAL**

**ADDITIONAL GRADING INFORMATION**

Polish **EXCELLENT**  
 Symmetry **EXCELLENT**  
 Fluorescence **NONE**  
 Inscription(s)

Comments: This Laboratory Grown Diamond was created by Chemical Vapor Deposition (CVD) growth process. Type IIa

**PROPORTIONS**



Sample Image Used

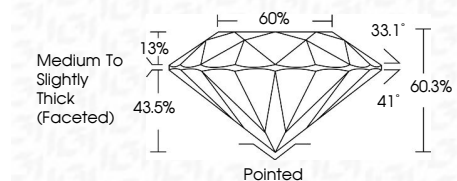
**COLOR**

D E F G H I J Faint Very Light Light

**CLARITY**

FL	IF	VVS <sup>1-2</sup>	VS <sup>1-2</sup>	SI <sup>1-2</sup>	I <sup>1-3</sup>
Flawless	Internally Flawless	Very Very Slightly Included	Very Slightly Included	Slightly Included	Included

March 16, 2026  
 IGI Report Number  
 Description **LABORATORY GROWN DIAMOND**  
 Shape and Cutting Style **ROUND BRILLIANT**  
 Measurements **8.00 - 8.04 X 4.83 MM**  
**GRADING RESULTS**  
 Carat Weight **1.89 CARAT**  
 Color Grade **D**  
 Clarity Grade **VVS 2**  
 Cut Grade **IDEAL**



**ADDITIONAL GRADING INFORMATION**

Polish **EXCELLENT**  
 Symmetry **EXCELLENT**  
 Fluorescence **NONE**  
 Inscription(s)   
 Comments: This Laboratory Grown Diamond was created by Chemical Vapor Deposition (CVD) growth process. Type IIa



**IGI**



March 16, 2026	IGI Report No	<b>ROUND BRILLIANT</b>
8.00 - 8.04 X 4.83 MM	Carat Weight	<b>1.89 CARAT</b>
	Color Grade	<b>D</b>
	Clarity Grade	<b>VVS 2</b>
	Cut Grade	<b>IDEAL</b>
	Depth	<b>60.3%</b>
	Table	<b>60%</b>
	Girdle	<b>Medium To Slightly Thick (Faceted)</b>
	Culet	<b>Pointed</b>
	Polish	<b>EXCELLENT</b>
	Symmetry	<b>EXCELLENT</b>
	Fluorescence	<b>NONE</b>
	Inscriptions(s)	
Comments: This Laboratory Grown Diamond was created by Chemical Vapor Deposition (CVD) growth process. Type IIa		