



ELECTRONIC COPY

Report verification at igi.org

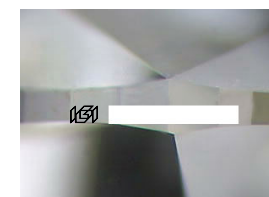
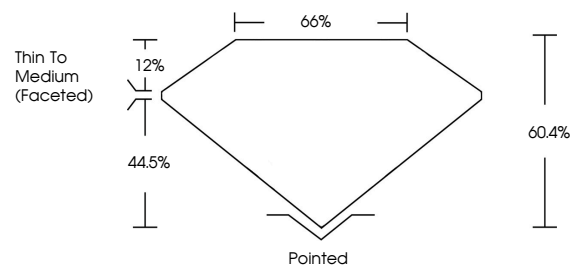
LABORATORY GROWN DIAMOND REPORT

March 31, 2026
 IGI Report Number
 Description **LABORATORY GROWN DIAMOND**
 Shape and Cutting Style **PEAR BRILLIANT**
 Measurements **10.66 X 6.46 X 3.90 MM**
GRADING RESULTS
 Carat Weight **1.54 CARAT**
 Color Grade **E**
 Clarity Grade **VS 2**

ADDITIONAL GRADING INFORMATION

Polish **EXCELLENT**
 Symmetry **VERY GOOD**
 Fluorescence **NONE**
 Inscription(s) 
 Comments: This Laboratory Grown Diamond was created by Chemical Vapor Deposition (CVD) growth process.
 Type IIa

PROPORTIONS



Sample Image Used

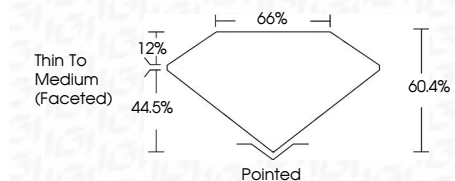
COLOR

D E F G H I J Faint Very Light Light

CLARITY

FL	IF	VS ¹⁻²	VS ¹⁻²	SI ¹⁻²	I ¹⁻³
Flawless	Internally Flawless	Very Very Slightly Included	Very Slightly Included	Slightly Included	Included

March 31, 2026
 IGI Report Number
 Description **LABORATORY GROWN DIAMOND**
 Shape and Cutting Style **PEAR BRILLIANT**
 Measurements **10.66 X 6.46 X 3.90 MM**
GRADING RESULTS
 Carat Weight **1.54 CARAT**
 Color Grade **E**
 Clarity Grade **VS 2**



ADDITIONAL GRADING INFORMATION

Polish **EXCELLENT**
 Symmetry **VERY GOOD**
 Fluorescence **NONE**
 Inscription(s) 
 Comments: This Laboratory Grown Diamond was created by Chemical Vapor Deposition (CVD) growth process.
 Type IIa



March 31, 2026
 IGI Report No
PEAR BRILLIANT
 10.66 X 6.46 X 3.90 MM
 1.54 CARAT
 Color Grade
 VS 2
 Depth
 60.4%
 Table
 66%
 Girdle
 Thin To Medium (Faceted)
 Culet
 Pointed
 Polish
 EXCELLENT
 Symmetry
 VERY GOOD
 Fluorescence
 NONE
 Inscription(s)

 Comments: This Laboratory Grown Diamond was created by Chemical Vapor Deposition (CVD) growth process.
 Type IIa