



LABORATORY GROWN DIAMOND REPORT

September 23, 2025

IGI Report Number

Description

LABORATORY GROWN DIAMOND

Shape and Cutting Style

PEAR BRILLIANT

Measurements

7.87 X 5.08 X 3.04 MM

GRADING RESULTS

Carat Weight

0.73 CARAT

Color Grade

D

Clarity Grade

VVS 1

ADDITIONAL GRADING INFORMATION

Polish

EXCELLENT

Symmetry

VERY GOOD

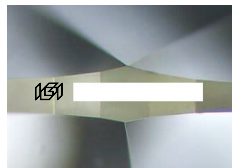
Fluorescence

NONE

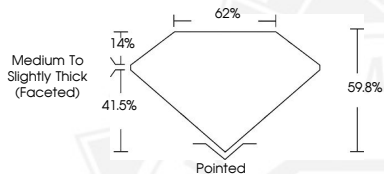
Inscription(s)



Comments: As Grown - No indication of post-growth treatment. This Laboratory Grown Diamond was created by High Pressure High Temperature (HPHT) growth process. Type II



Sample Image Used



September 23, 2025

IGI Report Number

PEAR BRILLIANT

LABORATORY GROWN DIAMOND

7.87 X 5.08 X 3.04 MM

Carat Weight

0.73 CARAT

Color Grade

D

Clarity Grade

VVS 1

Polish

Symmetry

EXCELLENT

Fluorescence

VERY GOOD

Inscription(s)



NONE

Comments: As Grown - No indication of post-growth treatment. This Laboratory Grown Diamond was created by High Pressure High Temperature (HPHT) growth process. Type II

September 23, 2025

IGI Report Number

PEAR BRILLIANT

LABORATORY GROWN DIAMOND

7.87 X 5.08 X 3.04 MM

Carat Weight

0.73 CARAT

Color Grade

D

Clarity Grade

VVS 1

Polish

Symmetry

EXCELLENT

Fluorescence

VERY GOOD

Inscription(s)



NONE

Comments: As Grown - No indication of post-growth treatment. This Laboratory Grown Diamond was created by High Pressure High Temperature (HPHT) growth process. Type II



THIS DOCUMENT WAS PRODUCED WITH THE FOLLOWING SECURITY MEASURES: SPECIAL DOCUMENT PAPER, INK SCREENS, WATERMARK, BACKGROUND DESIGNS, HOLOGRAM AND OTHER SECURITY FEATURES NOT LISTED AND DO EXCEED DOCUMENT SECURITY INDUSTRY GUIDELINES.