



ELECTRONIC COPY

Report verification at igi.org



October 28, 2024
IGI Report Number
Description LABORATORY GROWN DIAMOND
Shape and Cutting Style BAGUETTE
Measurements 11.81 X 6.74 X 4.36 MM
GRADING RESULTS
Carat Weight 4.03 CARATS
Color Grade FANCY INTENSE PINK
Clarity Grade VVS 1

LABORATORY GROWN DIAMOND REPORT

October 28, 2024
IGI Report Number
Description LABORATORY GROWN DIAMOND
Shape and Cutting Style BAGUETTE
Measurements 11.81 X 6.74 X 4.36 MM

GRADING RESULTS

Carat Weight 4.03 CARATS
Color Grade FANCY INTENSE PINK
Clarity Grade VVS 1

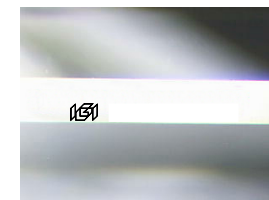
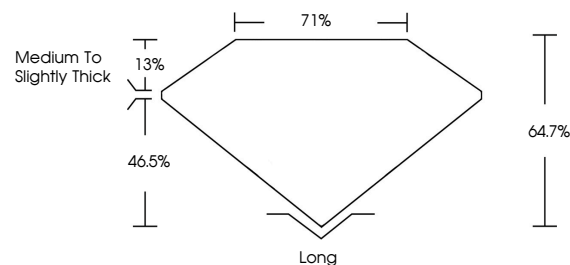
ADDITIONAL GRADING INFORMATION

Polish EXCELLENT
Symmetry EXCELLENT
Fluorescence SLIGHT

Inscription(s) IGI

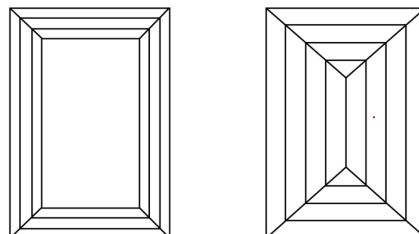
Comments: This Laboratory Grown Diamond was created by Chemical Vapor Deposition (CVD) growth process. Indications of post-growth treatment.

PROPORTIONS



Sample Image Used

CLARITY CHARACTERISTICS



KEY TO SYMBOLS

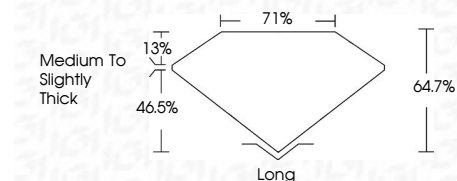
Red symbols indicate internal characteristics.
Green symbols indicate external characteristics.

COLOR

D E F G H I J Faint Very Light Light

CLARITY

IF VVS 1-2 VS 1-2 SI 1-2 I 1-3
Internally Flawless Very Very Slightly Included Very Slightly Included Slightly Included Included



ADDITIONAL GRADING INFORMATION

Polish EXCELLENT
Symmetry EXCELLENT
Fluorescence SLIGHT

Inscription(s) IGI
Comments: This Laboratory Grown Diamond was created by Chemical Vapor Deposition (CVD) growth process. Indications of post-growth treatment.



October 28, 2024
IGI Report No BAGUETTE
11.81 X 6.74 X 4.36 MM
4.03 CARATS
FANCY INTENSE PINK
VVS 1
64.7%
71%
Medium to Slightly Thick
Long
EXCELLENT
EXCELLENT
SLIGHT
IGI
Comments: This Laboratory Grown Diamond was created by Chemical Vapor Deposition (CVD) growth process. Indications of post-growth treatment.