



# INTERNATIONAL GEMOLOGICAL INSTITUTE

ELECTRONIC COPY

## LABORATORY GROWN DIAMOND REPORT

December 26, 2025

IGI Report Number

Description

Shape and Cutting Style

Measurements

LABORATORY GROWN DIAMOND

PEAR MODIFIED BRILLIANT

7.60 X 4.81 X 3.07 MM

### GRADING RESULTS

Carat Weight

0.81 CARAT

Color Grade

FANCY PINKISH BROWN

Clarity Grade

VS 1

### ADDITIONAL GRADING INFORMATION

Polish

VERY GOOD

Symmetry

VERY GOOD

Fluorescence

SLIGHT

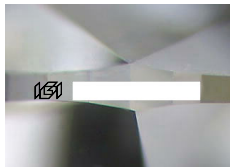
Inscription(s)



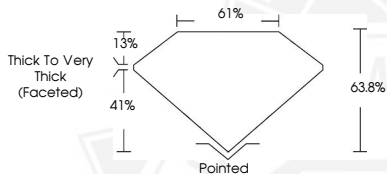
Comments: This Laboratory Grown Diamond was created by Chemical Vapor Deposition (CVD) growth process.

Indications of post-growth treatment.

Secondary color: Orange



Sample Image Used



December 26, 2025

IGI Report Number

PEAR MODIFIED BRILLIANT

LABORATORY GROWN DIAMOND

7.60 X 4.81 X 3.07 MM

Carat Weight 0.81 CARAT

Color Grade FANCY PINKISH

Clarity Grade BROWN

Polish VS 1

Symmetry VERY GOOD

Fluorescence VERY GOOD

Inscription(s) SLIGHT

Comments: This Laboratory Grown Diamond was created by Chemical Vapor Deposition (CVD) growth process. Indications of post-growth treatment.

Secondary color: Orange

December 26, 2025

IGI Report Number

PEAR MODIFIED BRILLIANT

LABORATORY GROWN DIAMOND

7.60 X 4.81 X 3.07 MM

Carat Weight 0.81 CARAT

Color Grade FANCY PINKISH

Clarity Grade BROWN

Polish VS 1

Symmetry VERY GOOD

Fluorescence VERY GOOD

Inscription(s) SLIGHT

Comments: This Laboratory Grown Diamond was created by Chemical Vapor Deposition (CVD) growth process. Indications of post-growth treatment.

Secondary color: Orange



THIS DOCUMENT WAS PRODUCED WITH THE FOLLOWING SECURITY MEASURES: SPECIAL DOCUMENT PAPER, INK SCREENS, WATERMARK, BACKGROUND DESIGNS, HOLOGRAM AND OTHER SECURITY FEATURES NOT LISTED AND DO EXCEED DOCUMENT SECURITY INDUSTRY GUIDELINES.

For terms & conditions and to verify this report, please visit [www.igi.org](http://www.igi.org)