



ELECTRONIC COPY

Report verification at igi.org

DIAMOND REPORT

April 1, 2026
 IGI Report Number
 Description **NATURAL DIAMOND**
 Shape and Cutting Style **OVAL BRILLIANT**
 Measurements **7.83 X 5.53 X 3.48 MM**

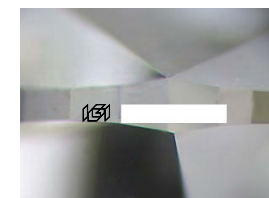
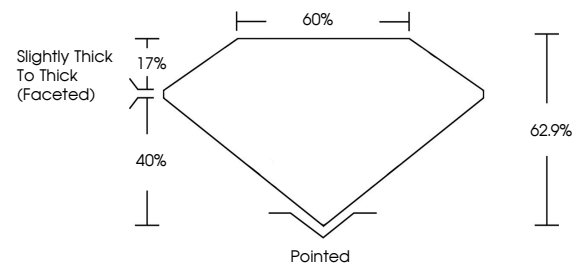
GRADING RESULTS

Carat Weight **1.01 CARAT**
 Color Grade **F**
 Clarity Grade **SI 2**
 Cut Grade **VERY GOOD**

ADDITIONAL GRADING INFORMATION

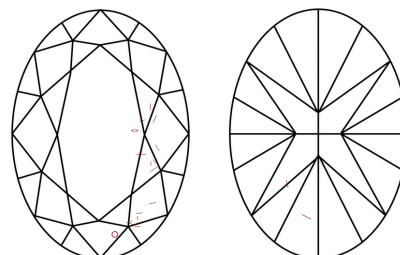
Polish **EXCELLENT**
 Symmetry **EXCELLENT**
 Fluorescence **SLIGHT**
 Inscription(s)

PROPORTIONS



Sample Image Used

CLARITY CHARACTERISTICS



KEY TO SYMBOLS

Red symbols indicate internal characteristics.
 Green symbols indicate external characteristics.

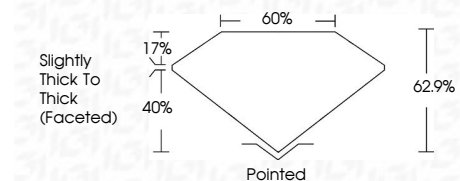
COLOR

| D - F | G - J | K - M | N - R | S - Z | FANCY |
|-----------|----------------|-----------------|------------------|-------------|-------|
| Colorless | Near Colorless | Slightly Tinted | Very Light Color | Light Color | |

CLARITY

| FL | IF | VVS ¹⁻² | VS ¹⁻² | SI ¹⁻² | I ¹⁻³ |
|----------|---------------------|-----------------------------|------------------------|-------------------|------------------|
| Flawless | Internally Flawless | Very Very Slightly Included | Very Slightly Included | Slightly Included | Included |

April 1, 2026
 IGI Report Number
 Description **NATURAL DIAMOND**
 Shape and Cutting Style **OVAL BRILLIANT**
 Measurements **7.83 X 5.53 X 3.48 MM**
GRADING RESULTS
 Carat Weight **1.01 CARAT**
 Color Grade **F**
 Clarity Grade **SI 2**
 Cut Grade **VERY GOOD**



ADDITIONAL GRADING INFORMATION

Polish **EXCELLENT**
 Symmetry **EXCELLENT**
 Fluorescence **SLIGHT**
 Inscription(s)



IGI



April 1, 2026
 IGI Report No
OVAL BRILLIANT
 7.83 X 5.53 X 3.48 MM
 Carat Weight **1.01 CARAT**
 Color Grade **F**
 Clarity Grade **SI 2**
 Depth **VERY GOOD**
 Table **62.9%**
 Girdle **60%**
 Slightly Thick To Thick (Faceted)
 Culet **Pointed**
 Polish **EXCELLENT**
 Symmetry **EXCELLENT**
 Fluorescence **SLIGHT**
 Inscription(s)