



ELECTRONIC COPY

Report verification at igi.org

LABORATORY GROWN DIAMOND REPORT

November 11, 2025
 IGI Report Number
 Description **LABORATORY GROWN DIAMOND**
 Shape and Cutting Style **CUT CORNERED RECTANGULAR MODIFIED BRILLIANT**
 Measurements **9.04 X 6.64 X 4.48 MM**

GRADING RESULTS

Carat Weight **2.41 CARATS**
 Color Grade **D**
 Clarity Grade **VVS 1**

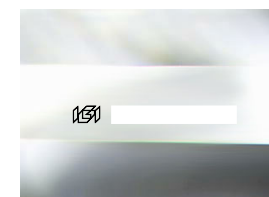
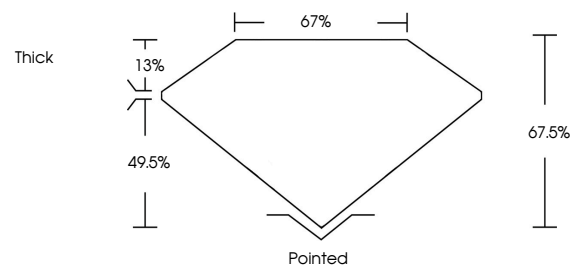
ADDITIONAL GRADING INFORMATION

Polish **EXCELLENT**
 Symmetry **EXCELLENT**
 Fluorescence **NONE**

Inscription(s)

Comments: This Laboratory Grown Diamond was created by Chemical Vapor Deposition (CVD) growth process. Type IIa

PROPORTIONS



Sample Image Used

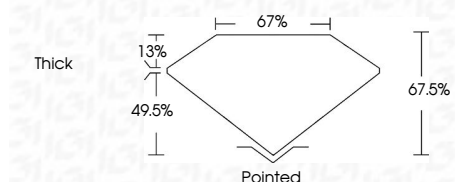
COLOR

D E F G H I J Faint Very Light Light

CLARITY

| FL | IF | VVS ¹⁻² | VS ¹⁻² | SI ¹⁻² | I ¹⁻³ |
|----------|---------------------|-----------------------------|------------------------|-------------------|------------------|
| Flawless | Internally Flawless | Very Very Slightly Included | Very Slightly Included | Slightly Included | Included |

November 11, 2025
 IGI Report Number
 Description **LABORATORY GROWN DIAMOND**
 Shape and Cutting Style **CUT CORNERED RECTANGULAR MODIFIED BRILLIANT**
 Measurements **9.04 X 6.64 X 4.48 MM**
GRADING RESULTS
 Carat Weight **2.41 CARATS**
 Color Grade **D**
 Clarity Grade **VVS 1**



ADDITIONAL GRADING INFORMATION

Polish **EXCELLENT**
 Symmetry **EXCELLENT**
 Fluorescence **NONE**

Inscription(s)
 Comments: This Laboratory Grown Diamond was created by Chemical Vapor Deposition (CVD) growth process. Type IIa



| | | |
|-----------------------|----------------|--|
| November 11, 2025 | IGI Report No | CUT CORNERED RECT. MODIFIED BRILLIANT |
| 9.04 X 6.64 X 4.48 MM | Carat Weight | 2.41 CARATS |
| D | Color Grade | D |
| VVS 1 | Clarity Grade | VVS 1 |
| 67.5% | Depth | 67.5% |
| 67% | Table | 67% |
| Thick | Girdle | Thick |
| Pointed | Culet | Pointed |
| EXCELLENT | Polish | EXCELLENT |
| EXCELLENT | Symmetry | EXCELLENT |
| NONE | Fluorescence | NONE |
| | Inscription(s) | |

Comments: This Laboratory Grown Diamond was created by Chemical Vapor Deposition (CVD) growth process. Type IIa