



**ELECTRONIC COPY**

Report verification at [igi.org](http://igi.org)

**DIAMOND REPORT**

February 20, 2025  
 IGI Report Number  
 Description **NATURAL DIAMOND**  
 Shape and Cutting Style **HEART BRILLIANT**  
 Measurements **6.11 X 6.92 X 4.20 MM**

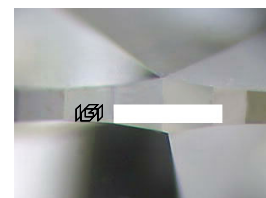
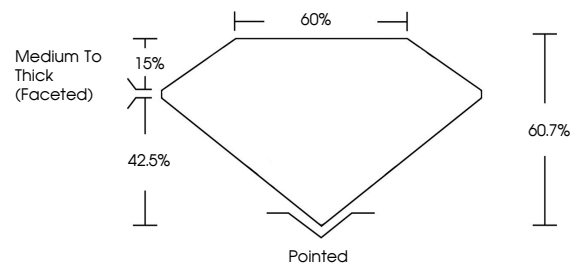
**GRADING RESULTS**

Carat Weight **1.05 CARAT**  
 Color Grade **E**  
 Clarity Grade **SI 2**  
 Cut Grade **VERY GOOD**

**ADDITIONAL GRADING INFORMATION**

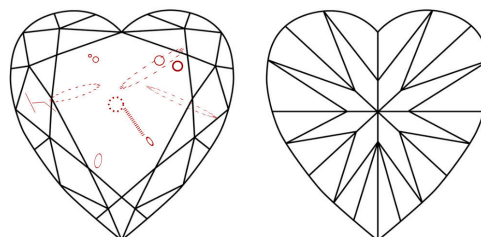
Polish **EXCELLENT**  
 Symmetry **EXCELLENT**  
 Fluorescence **NONE**  
 Inscription(s)

**PROPORTIONS**



Sample Image Used

**CLARITY CHARACTERISTICS**



**KEY TO SYMBOLS**

Red symbols indicate internal characteristics.  
 Green symbols indicate external characteristics.

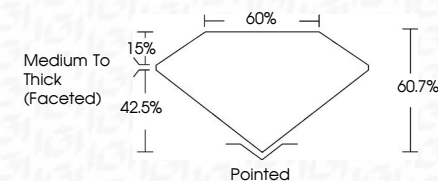
**COLOR**

D - F	G - J	K - M	N - R	S - Z	FANCY
Colorless	Near Colorless	Slightly Tinted	Very Light Color	Light Color	

**CLARITY**

IF	VVS <sup>1-2</sup>	VS <sup>1-2</sup>	SI <sup>1-2</sup>	I <sup>1-3</sup>
Internally Flawless	Very Very Slightly Included	Very Slightly Included	Slightly Included	Included

February 20, 2025  
 IGI Report Number  
 Description **NATURAL DIAMOND**  
 Shape and Cutting Style **HEART BRILLIANT**  
 Measurements **6.11 X 6.92 X 4.20 MM**  
**GRADING RESULTS**  
 Carat Weight **1.05 CARAT**  
 Color Grade **E**  
 Clarity Grade **SI 2**  
 Cut Grade **VERY GOOD**



**ADDITIONAL GRADING INFORMATION**

Polish **EXCELLENT**  
 Symmetry **EXCELLENT**  
 Fluorescence **NONE**  
 Inscription(s)



**IGI**



February 20, 2025	1.05 CARAT	E	SI 2	60.7%	60%	Medium To Thick (Faceted)	Pointed	EXCELLENT	EXCELLENT	NONE	
IGI Report No	Carat Weight	Color Grade	Clarity Grade	Depth	Table	Girdle	Culet	Polish	Symmetry	Fluorescence	Inscriptions(s)
HEART BRILLIANT	6.11 X 6.92 X 4.20 MM	VERY GOOD	VERY GOOD	60.7%	60%	Medium To Thick (Faceted)	Pointed	EXCELLENT	EXCELLENT	NONE	