



ELECTRONIC COPY

LABORATORY GROWN DIAMOND REPORT

LG

Report verification at igi.org

LABORATORY GROWN DIAMOND REPORT

LABORATORY GROWN DIAMOND REPORT

LABORATORY GROWN DIAMOND REPORT

April 26, 2024
IGI Report Number LG
Description LABORATORY GROWN DIAMOND
Shape and Cutting Style CUSHION BRILLIANT
Measurements 6.89 X 6.30 X 4.24 MM

GRADING RESULTS

Carat Weight 1.51 CARAT
Color Grade G
Clarity Grade VVS 2

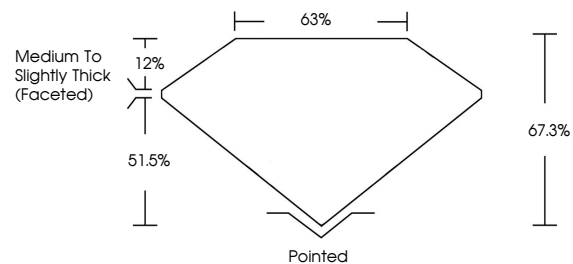
ADDITIONAL GRADING INFORMATION

Polish EXCELLENT
Symmetry EXCELLENT
Fluorescence NONE

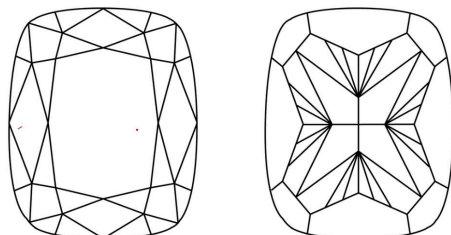
Inscription(s) IGI LG

Comments: This Laboratory Grown Diamond was created by Chemical Vapor Deposition (CVD) growth process and may include post-growth treatment. Type IIa

PROPORTIONS



CLARITY CHARACTERISTICS



KEY TO SYMBOLS

Red symbols indicate internal characteristics.
Green symbols indicate external characteristics.

GRADING SCALES

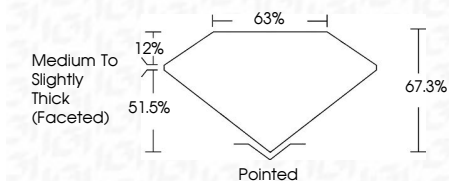
CLARITY

Table mapping clarity grades (IF, VVS 1-2, VS 1-2, SI 1-2, I 1-3) to their descriptions (Internally Flawless, Very Very Slightly Included, Very Slightly Included, Slightly Included, Included).

COLOR

Table mapping color grades (D, E, F, G, H, I, J, Faint, Very Light, Light) to their descriptions.

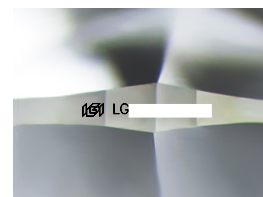
April 26, 2024
IGI Report Number LG
Description LABORATORY GROWN DIAMOND
Shape and Cutting Style CUSHION BRILLIANT
Measurements 6.89 X 6.30 X 4.24 MM
GRADING RESULTS
Carat Weight 1.51 CARAT
Color Grade G
Clarity Grade VVS 2



ADDITIONAL GRADING INFORMATION

Polish EXCELLENT
Symmetry EXCELLENT
Fluorescence NONE
Inscription(s) IGI LG

Comments: This Laboratory Grown Diamond was created by Chemical Vapor Deposition (CVD) growth process and may include post-growth treatment. Type IIa



Sample Image Used



IGI

April 26, 2024
IGI Report No LG
CUSHION BRILLIANT
6.89 X 6.30 X 4.24 MM
1.51 CARAT
G
VVS 2
67.3%
63%
Medium to Slightly Thick (Faceted)
Pointed
EXCELLENT
EXCELLENT
NONE
IGI LG
Comments: This Laboratory Grown Diamond was created by Chemical Vapor Deposition (CVD) growth process and may include post-growth treatment. Type IIa