



ELECTRONIC COPY

Report verification at igi.org

DIAMOND REPORT

July 24, 2025
IGI Report Number
Description NATURAL DIAMOND
Shape and Cutting Style PEAR BRILLIANT
Measurements 8.14 X 5.59 X 3.55 MM

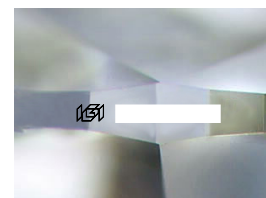
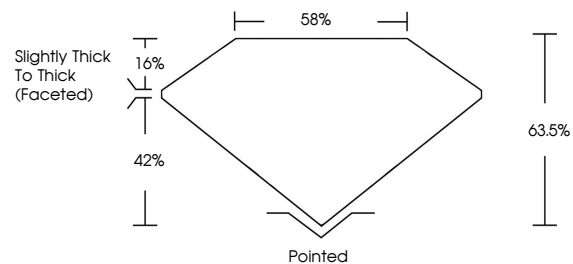
GRADING RESULTS

Carat Weight 1.01 CARAT
Color Grade I
Clarity Grade SI 2
Cut Grade VERY GOOD

ADDITIONAL GRADING INFORMATION

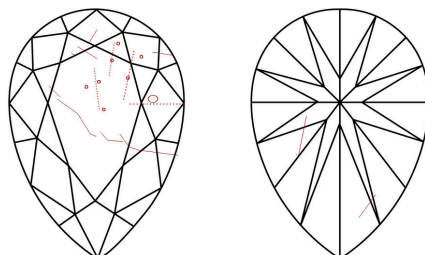
Polish EXCELLENT
Symmetry EXCELLENT
Fluorescence NONE
Inscription(s) IGI

PROPORTIONS



Sample Image Used

CLARITY CHARACTERISTICS



KEY TO SYMBOLS

Red symbols indicate internal characteristics.
Green symbols indicate external characteristics.

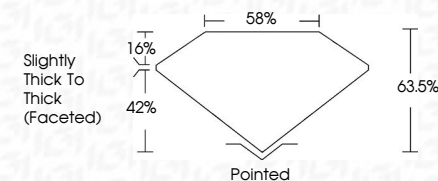
COLOR

Table with columns for color grades: D-F, G-J, K-M, N-R, S-Z, FANCY. Row for Colorless, Near Colorless, Slightly Tinted, Very Light Color, Light Color.

CLARITY

Table with columns for clarity grades: IF, VS 1-2, VS 1-2, SI 1-2, I 1-3. Row for Internally Flawless, Very Very Slightly Included, Very Slightly Included, Slightly Included, Included.

July 24, 2025
IGI Report Number
Description NATURAL DIAMOND
Shape and Cutting Style PEAR BRILLIANT
Measurements 8.14 X 5.59 X 3.55 MM
GRADING RESULTS
Carat Weight 1.01 CARAT
Color Grade I
Clarity Grade SI 2
Cut Grade VERY GOOD



ADDITIONAL GRADING INFORMATION

Polish EXCELLENT
Symmetry EXCELLENT
Fluorescence NONE
Inscription(s) IGI



IGI

Summary of report details including date, report number, measurements, carat weight, color grade, clarity grade, cut grade, and grading results.