



ELECTRONIC COPY

Report verification at igi.org

LABORATORY GROWN DIAMOND REPORT

December 17, 2025  
 IGI Report Number  
 Description **LABORATORY GROWN DIAMOND**  
 Shape and Cutting Style **MARQUISE MODIFIED BRILLIANT**  
 Measurements **10.38 X 5.33 X 3.52 MM**

**GRADING RESULTS**

Carat Weight **1.37 CARAT**  
 Color Grade **FANCY INTENSE BROWNISH PINK**  
 Clarity Grade **VVS 2**

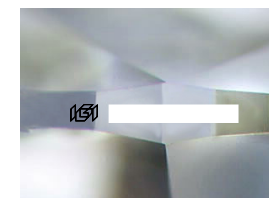
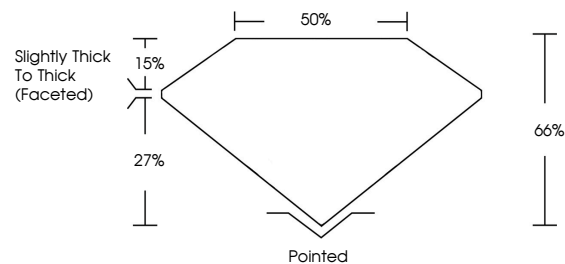
ADDITIONAL GRADING INFORMATION

Polish **EXCELLENT**  
 Symmetry **EXCELLENT**  
 Fluorescence **SLIGHT**

Inscription(s)

Comments: This Laboratory Grown Diamond was created by Chemical Vapor Deposition (CVD) growth process. Indications of post-growth treatment.

PROPORTIONS



Sample Image Used

CLARITY CHARACTERISTICS

KEY TO SYMBOLS

Red symbols indicate internal characteristics.  
 Green symbols indicate external characteristics.

COLOR

D E F G H I J Faint Very Light Light

CLARITY

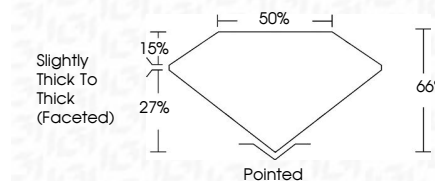
FL IF VVS<sup>1-2</sup> VS<sup>1-2</sup> SI<sup>1-2</sup> I<sup>1-3</sup>

Flawless Internally Flawless Very Very Slightly Included Very Slightly Included Slightly Included Included

December 17, 2025  
 IGI Report Number  
 Description **LABORATORY GROWN DIAMOND**  
 Shape and Cutting Style **MARQUISE MODIFIED BRILLIANT**  
 Measurements **10.38 X 5.33 X 3.52 MM**

**GRADING RESULTS**

Carat Weight **1.37 CARAT**  
 Color Grade **FANCY INTENSE BROWNISH PINK**  
 Clarity Grade **VVS 2**



ADDITIONAL GRADING INFORMATION

Polish **EXCELLENT**  
 Symmetry **EXCELLENT**  
 Fluorescence **SLIGHT**

Inscription(s)

Comments: This Laboratory Grown Diamond was created by Chemical Vapor Deposition (CVD) growth process. Indications of post-growth treatment.



December 17, 2025  
 IGI Report No **MARQUISE MODIFIED BRILLIANT**  
 1.37 CARAT  
 Carat Weight **FANCY INTENSE BROWNISH PINK**  
 Color Grade **VVS 2**  
 Clarity Grade **VVS 2**  
 Depth **66%**  
 Table **50%**  
 Girdle **Slightly Thick To Thick (Faceted)**  
 Culet **Pointed**  
 Polish **EXCELLENT**  
 Symmetry **EXCELLENT**  
 Fluorescence **SLIGHT**  
 Inscription(s)

Comments: This Laboratory Grown Diamond was created by Chemical Vapor Deposition (CVD) growth process. Indications of post-growth treatment.