



INTERNATIONAL GEMOLOGICAL INSTITUTE

LABORATORY GROWN DIAMOND REPORT

April 23, 2025

IGI Report Number

Description

Shape and Cutting Style

Measurements

LABORATORY GROWN DIAMOND

PEAR BRILLIANT

6.26 X 3.83 X 2.24 MM

GRADING RESULTS

Carat Weight

Color Grade

Clarity Grade

0.31 CARAT

FANCY VIVID GREEN

VS 2

ADDITIONAL GRADING INFORMATION

Polish

Symmetry

Fluorescence

Inscription(s)

VERY GOOD

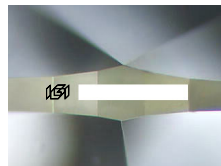
VERY GOOD

NONE

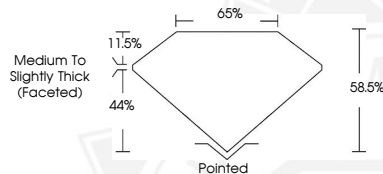


Comments: This Laboratory Grown Diamond was created by High Pressure High Temperature (HPHT) growth process.
Indications of post-growth treatment.

ELECTRONIC COPY



Sample Image Used



April 23, 2025

IGI Report Number

PEAR BRILLIANT

LABORATORY GROWN DIAMOND

6.26 X 3.83 X 2.24 MM

Carat Weight **0.31 CARAT**

Color Grade **FANCY VIVID GREEN**

Clarity Grade **VS 2**

Polish **VERY GOOD**

Symmetry **VERY GOOD**

Fluorescence **NONE**

Inscription(s)

Comments: This Laboratory Grown Diamond was created by High Pressure High Temperature (HPHT) growth process. Indications of post-growth treatment.

April 23, 2025

IGI Report Number

PEAR BRILLIANT

LABORATORY GROWN DIAMOND

6.26 X 3.83 X 2.24 MM

Carat Weight **0.31 CARAT**

Color Grade **FANCY VIVID GREEN**

Clarity Grade **VS 2**

Polish **VERY GOOD**

Symmetry **VERY GOOD**

Fluorescence **NONE**

Inscription(s)

Comments: This Laboratory Grown Diamond was created by High Pressure High Temperature (HPHT) growth process. Indications of post-growth treatment.



THIS DOCUMENT WAS PRODUCED WITH THE FOLLOWING SECURITY MEASURES: SPECIAL DOCUMENT PAPER, INK SCREENS, WATERMARK, BACKGROUND DESIGNS, HOLOGRAM AND OTHER SECURITY FEATURES NOT LISTED AND DO EXCEED DOCUMENT SECURITY INDUSTRY GUIDELINES.

For terms & conditions and to verify this report, please visit www.igi.org