

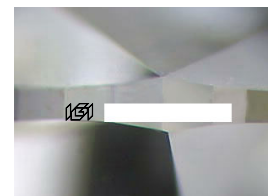
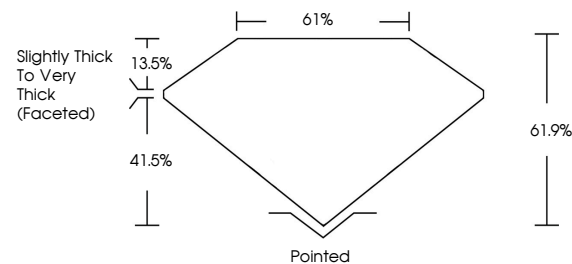


ELECTRONIC COPY

LABORATORY GROWN DIAMOND REPORT

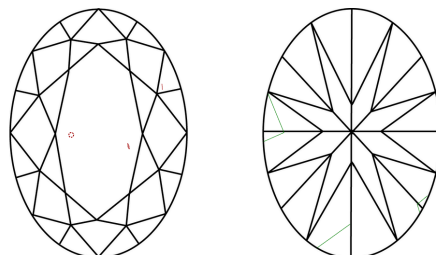
Report verification at igi.org

PROPORTIONS



Sample Image Used

CLARITY CHARACTERISTICS



KEY TO SYMBOLS

Red symbols indicate internal characteristics.
Green symbols indicate external characteristics.

COLOR

D E F G H I J Faint Very Light Light

CLARITY

IF VS¹⁻² VS¹⁻² S¹⁻² |¹⁻³

Internally Flawless	Very Very Slightly Included	Very Slightly Included	Slightly Included	Included
------------------------	--------------------------------	---------------------------	----------------------	----------

LABORATORY GROWN DIAMOND REPORT

August 26, 2025

IGI Report Number

Description	LABORATORY GROWN DIAMOND
-------------	--------------------------

Shape and Cutting Style **OVAL BRILLIANT**

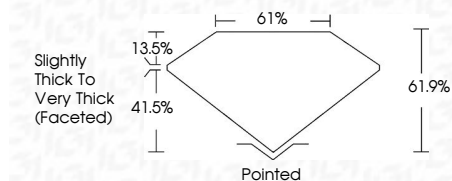
Measurements 8.01 X 5.49 X 3.40 MM

GRADING RESULTS

Carat Weight 1.00 CARAT

Color Grade G

Clarity Grade VS 1



ADDITIONAL GRADING INFORMATION

Polish **VERY GOOD**Symmetry **FAIR**Fluorescence **NONE**Inscription(s)

Comments: This Laboratory Grown Diamond was created by Chemical Vapor Deposition (CVD) growth process.
Type IIa



August 26, 2005	Comments:
GI Report No.	The Laboratory Grown Diamond was
CVI	certified as a Synthetic Vapor Deposition
GYAL BRILLANT	(GVD) growth process.
	Type IIG
0.01 X 0.02 X 3.40 MM	
Carat Weight	1.00 CARAT
Color Grade	G
Clarity Grade	VS 1
Depth	61.5%
Table	61%
Girdle	Slightly Thick To Very Thick (faceted)
Culet	Pointed
Polish	VERY GOOD
Symmetry	FAIR
Fluorescence	NONE
Inscriptions(s)	100

