



ELECTRONIC COPY

Report verification at igi.org

DIAMOND REPORT

April 21, 2026
IGI Report Number
Description **NATURAL DIAMOND**
Shape and Cutting Style **OVAL BRILLIANT**
Measurements **8.55 X 5.29 X 3.43 MM**

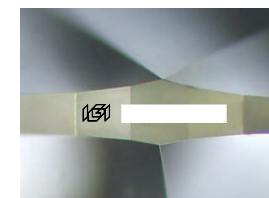
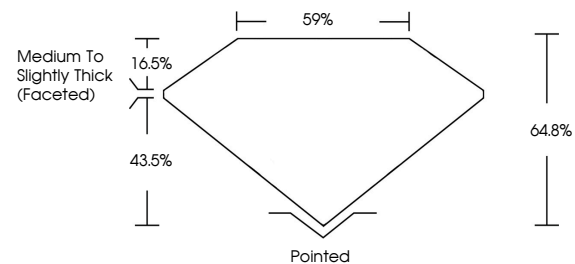
GRADING RESULTS

Carat Weight **1.00 CARAT**
Color Grade **I**
Clarity Grade **VS 2**
Cut Grade **VERY GOOD**

ADDITIONAL GRADING INFORMATION

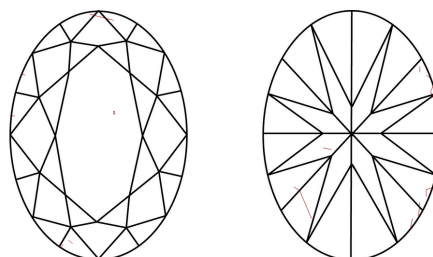
Polish **EXCELLENT**
Symmetry **EXCELLENT**
Fluorescence **NONE**
Inscription(s)

PROPORTIONS



Sample Image Used

CLARITY CHARACTERISTICS



KEY TO SYMBOLS

Red symbols indicate internal characteristics.
Green symbols indicate external characteristics.

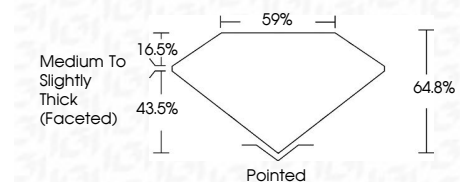
COLOR

D - F	G - J	K - M	N - R	S - Z	FANCY
Colorless	Near Colorless	Slightly Tinted	Very Light Color	Light Color	

CLARITY

FL	IF	VVS ¹⁻²	VS ¹⁻²	SI ¹⁻²	I ¹⁻³
Flawless	Internally Flawless	Very Very Slightly Included	Very Slightly Included	Slightly Included	Included

April 21, 2026
IGI Report Number
Description **NATURAL DIAMOND**
Shape and Cutting Style **OVAL BRILLIANT**
Measurements **8.55 X 5.29 X 3.43 MM**
GRADING RESULTS
Carat Weight **1.00 CARAT**
Color Grade **I**
Clarity Grade **VS 2**
Cut Grade **VERY GOOD**



ADDITIONAL GRADING INFORMATION

Polish **EXCELLENT**
Symmetry **EXCELLENT**
Fluorescence **NONE**
Inscription(s)



IGI



April 21, 2026
IGI Report No
OVAL BRILLIANT
8.55 X 5.29 X 3.43 MM
Carat Weight **1.00 CARAT**
Color Grade **I**
Clarity Grade **VS 2**
Depth **64.8%**
Table **59%**
Girdle **Medium To Slightly Thick (Faceted)**
Culet **Pointed**
Polish **EXCELLENT**
Symmetry **EXCELLENT**
Fluorescence **NONE**
Inscriptions(s)