



Report verification at igi.org

ELECTRONIC COPY

DIAMOND REPORT

September 29, 2025
 IGI Report Number
 Description **NATURAL DIAMOND**
 Shape and Cutting Style **OVAL BRILLIANT**
 Measurements **8.51 X 5.92 X 3.61 MM**

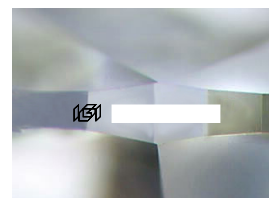
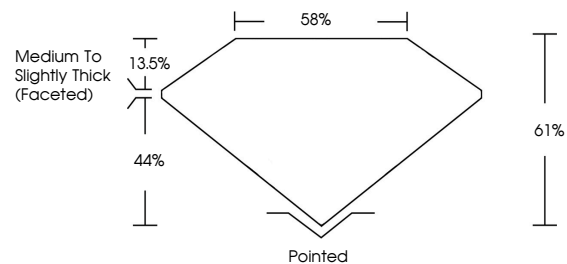
GRADING RESULTS

Carat Weight **1.12 CARAT**
 Color Grade **E**
 Clarity Grade **INTERNALLY FLAWLESS**
 Cut Grade **EXCELLENT**

ADDITIONAL GRADING INFORMATION

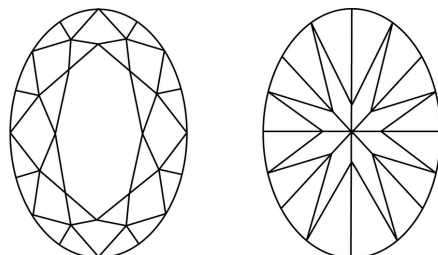
Polish **EXCELLENT**
 Symmetry **EXCELLENT**
 Fluorescence **VERY SLIGHT**
 Inscription(s)

PROPORTIONS



Sample Image Used

CLARITY CHARACTERISTICS



KEY TO SYMBOLS

Red symbols indicate internal characteristics.
Green symbols indicate external characteristics.

COLOR

D - F	G - J	K - M	N - R	S - Z	FANCY
Colorless	Near Colorless	Slightly Tinted	Very Light Color	Light Color	

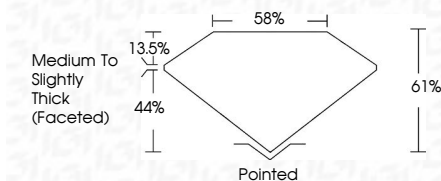
CLARITY

IF	VVS ¹⁻²	VS ¹⁻²	SI ¹⁻²	I ¹⁻³
Internally Flawless	Very Very Slightly Included	Very Slightly Included	Slightly Included	Included

September 29, 2025
 IGI Report Number
 Description **NATURAL DIAMOND**
 Shape and Cutting Style **OVAL BRILLIANT**
 Measurements **8.51 X 5.92 X 3.61 MM**

GRADING RESULTS

Carat Weight **1.12 CARAT**
 Color Grade **E**
 Clarity Grade **INTERNALLY FLAWLESS**
 Cut Grade **EXCELLENT**



ADDITIONAL GRADING INFORMATION

Polish **EXCELLENT**
 Symmetry **EXCELLENT**
 Fluorescence **VERY SLIGHT**
 Inscription(s)



IGI



September 29, 2025
 IGI Report No
OVAL BRILLIANT
8.51 X 5.92 X 3.61 MM
 Carat Weight **1.12 CARAT**
 Color Grade **E**
 Clarity Grade **IF**
 Cut Grade **EXCELLENT**
 Depth **61%**
 Table **58%**
 Girdle **Medium To Slightly Thick (Faceted)**
 Culet **Pointed**
 Polish **EXCELLENT**
 Symmetry **EXCELLENT**
 Fluorescence **VERY SLIGHT**
 Inscription(s)