



ELECTRONIC COPY

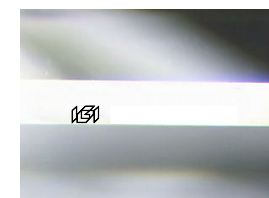
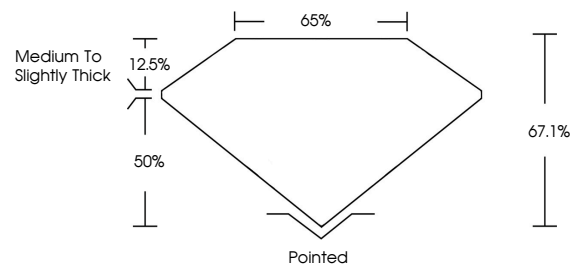
Report verification at igi.org



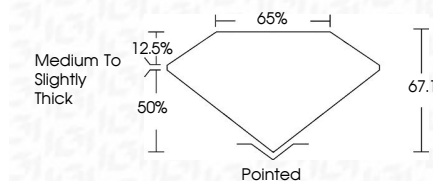
June 10, 2026
IGI Report Number
Description LABORATORY GROWN DIAMOND
Shape and Cutting Style CUT CORNERED RECTANGULAR MODIFIED BRILLIANT
Measurements 9.40 X 6.17 X 4.14 MM
GRADING RESULTS
Carat Weight 2.05 CARATS
Color Grade G
Clarity Grade VS 1

June 10, 2026
IGI Report Number
Description LABORATORY GROWN DIAMOND
Shape and Cutting Style CUT CORNERED RECTANGULAR MODIFIED BRILLIANT
Measurements 9.40 X 6.17 X 4.14 MM
GRADING RESULTS
Carat Weight 2.05 CARATS
Color Grade G
Clarity Grade VS 1

PROPORTIONS



Sample Image Used



ADDITIONAL GRADING INFORMATION

Polish EXCELLENT
Symmetry EXCELLENT
Fluorescence NONE
Inscription(s) IGI

Comments: This Laboratory Grown Diamond was created by Chemical Vapor Deposition (CVD) growth process. Type IIa

ADDITIONAL GRADING INFORMATION

Polish EXCELLENT
Symmetry EXCELLENT
Fluorescence NONE
Inscription(s) IGI
Comments: This Laboratory Grown Diamond was created by Chemical Vapor Deposition (CVD) growth process. Type IIa

COLOR

D E F G H I J Faint Very Light Light

CLARITY

FL IF VS 1-2 VS 2-2 SI 1-2 I 1-3
Flawless Internally Flawless Very Very Slightly Included Very Slightly Included Slightly Included Included



IGI



June 10, 2026
IGI Report No
CUT CORNERED RECT. MODIFIED BRILLIANT
9.40 X 6.17 X 4.14 MM
2.05 CARATS
Color Grade G
Clarity Grade VS 1
Table 67.1%
Girdle 65%
Medium to Slightly Thick
Culet Pointed
Polish EXCELLENT
Symmetry EXCELLENT
Fluorescence NONE
Inscription(s) IGI

Comments: This Laboratory Grown Diamond was created by Chemical Vapor Deposition (CVD) growth process. Type IIa