



ELECTRONIC COPY

Report verification at igi.org

LABORATORY GROWN DIAMOND REPORT

April 21, 2026
 IGI Report Number
 Description **LABORATORY GROWN DIAMOND**
 Shape and Cutting Style **MARQUISE BRILLIANT**
 Measurements **12.57 X 6.66 X 4.24 MM**

GRADING RESULTS

Carat Weight **2.04 CARATS**
 Color Grade **H**
 Clarity Grade **VS 1**

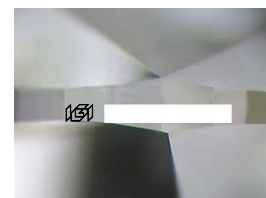
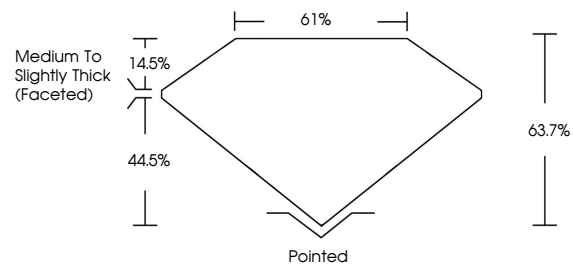
ADDITIONAL GRADING INFORMATION

Polish **EXCELLENT**
 Symmetry **EXCELLENT**
 Fluorescence **NONE**

Inscription(s)

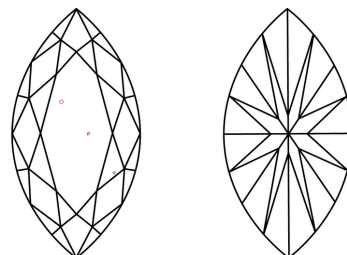
Comments: This Laboratory Grown Diamond was created by Chemical Vapor Deposition (CVD) growth process.
 Type IIa

PROPORTIONS



Sample Image Used

CLARITY CHARACTERISTICS



KEY TO SYMBOLS

Red symbols indicate internal characteristics.
 Green symbols indicate external characteristics.

COLOR

D E F G H I J Faint Very Light Light

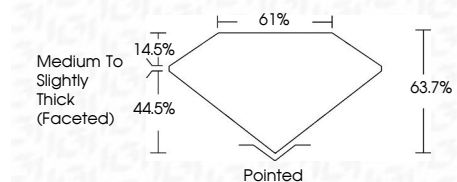
CLARITY

FL	IF	VS ¹⁻²	VS ¹⁻²	SI ¹⁻²	I ¹⁻³
Flawless	Internally Flawless	Very Very Slightly Included	Very Slightly Included	Slightly Included	Included

April 21, 2026
 IGI Report Number
 Description **LABORATORY GROWN DIAMOND**
 Shape and Cutting Style **MARQUISE BRILLIANT**
 Measurements **12.57 X 6.66 X 4.24 MM**

GRADING RESULTS

Carat Weight **2.04 CARATS**
 Color Grade **H**
 Clarity Grade **VS 1**



ADDITIONAL GRADING INFORMATION

Polish **EXCELLENT**
 Symmetry **EXCELLENT**
 Fluorescence **NONE**

Inscription(s)

Comments: This Laboratory Grown Diamond was created by Chemical Vapor Deposition (CVD) growth process.
 Type IIa



April 21, 2026	2.04 CARATS	H
IGI Report No	12.57 X 6.66 X 4.24 MM	VS 1
MARQUISE BRILLIANT	63.7%	61%
Carat Weight	Medium to Slightly Thick (Faceted)	Pointed
Color Grade	EXCELLENT	EXCELLENT
Clarity Grade	EXCELLENT	NONE
Depth	EXCELLENT	EXCELLENT
Table	EXCELLENT	EXCELLENT
Girdle	EXCELLENT	EXCELLENT
Culet	EXCELLENT	EXCELLENT
Polish	EXCELLENT	EXCELLENT
Symmetry	EXCELLENT	EXCELLENT
Fluorescence	EXCELLENT	EXCELLENT
Inscription(s)	EXCELLENT	EXCELLENT

Comments: This Laboratory Grown Diamond was created by Chemical Vapor Deposition (CVD) growth process.
 Type IIa