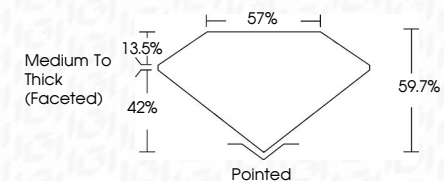




**DIAMOND REPORT**      **ELECTRONIC COPY**

October 28, 2023  
IGI Report Number  
Description      NATURAL DIAMOND  
Shape and Cutting Style      PEAR BRILLIANT  
Measurements      9.62 x 5.85 x 3.49 mm

**GRADING RESULTS**  
Carat Weight      1.16 CARAT  
Color Grade      K  
Clarity Grade      VS 2  
Cut Grade      VERY GOOD



**ADDITIONAL GRADING INFORMATION**  
Polish      EXCELLENT  
Symmetry      EXCELLENT  
Fluorescence      NONE  
Inscription(s)     



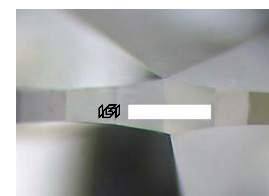
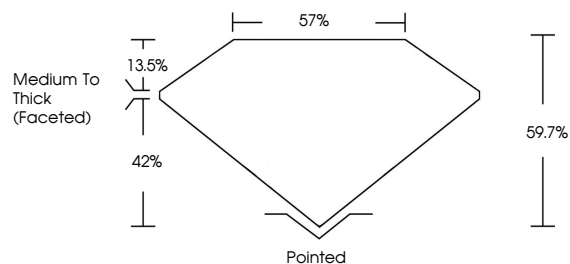
October 28, 2023  
IGI Report No  
NATURAL DIAMOND  
PEAR BRILLIANT  
9.62 x 5.85 x 3.49 mm  
Carat Weight      1.16 CARAT  
Color Grade      K  
Clarity Grade      VS 2  
Cut Grade      VERY GOOD  
Depth      59.7%  
Table      13.5%  
Grade      Medium To Thick (Faceted)  
Cut      Pointed  
Polish      EXCELLENT  
Symmetry      EXCELLENT  
Fluorescence      NONE  
Inscription(s)     

October 28, 2023  
IGI Report Number  
Description      NATURAL DIAMOND  
Shape and Cutting Style      PEAR BRILLIANT  
Measurements      9.62 x 5.85 x 3.49 mm

**GRADING RESULTS**  
Carat Weight      1.16 CARAT  
Color Grade      K  
Clarity Grade      VS 2  
Cut Grade      VERY GOOD

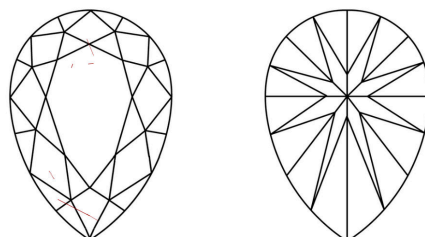
**ADDITIONAL GRADING INFORMATION**  
Polish      EXCELLENT  
Symmetry      EXCELLENT  
Fluorescence      NONE  
Inscription(s)     

**PROPORTIONS**



Sample Image Used

**CLARITY CHARACTERISTICS**



**KEY TO SYMBOLS**

Red symbols indicate internal characteristics.  
Green symbols indicate external characteristics.

**COLOR**

D - F	G - J	K - M	N - R	S - Z	FANCY
Colorless	Near Colorless	Slightly Tinted	Very Light Color	Light Color	

**CLARITY**

IF	VS <sup>1-2</sup>	VS <sup>1-2</sup>	SI <sup>1-2</sup>	I <sup>1-3</sup>
Internally Flawless	Very Very Slightly Included	Very Slightly Included	Slightly Included	Included

