



ELECTRONIC COPY

Report verification at igi.org

DIAMOND REPORT

January 15, 2026
 IGI Report Number
 Description **NATURAL DIAMOND**
 Shape and Cutting Style **EMERALD CUT**
 Measurements **8.74 X 5.95 X 4.00 MM**

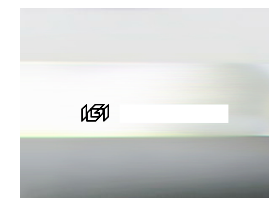
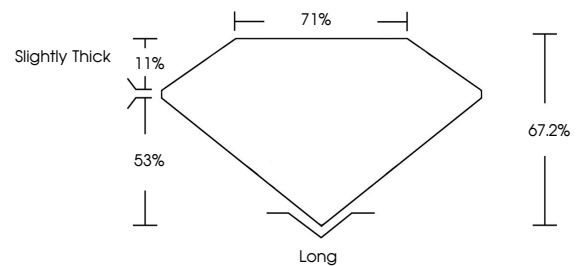
GRADING RESULTS

Carat Weight **2.00 CARATS**
 Color Grade **J**
 Clarity Grade **VS 2**
 Cut Grade **VERY GOOD**

ADDITIONAL GRADING INFORMATION

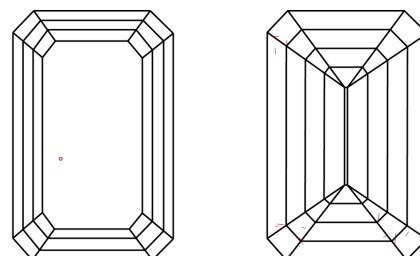
Polish **EXCELLENT**
 Symmetry **EXCELLENT**
 Fluorescence **SLIGHT**
 Inscription(s)

PROPORTIONS



Sample Image Used

CLARITY CHARACTERISTICS



KEY TO SYMBOLS

Red symbols indicate internal characteristics.
 Green symbols indicate external characteristics.

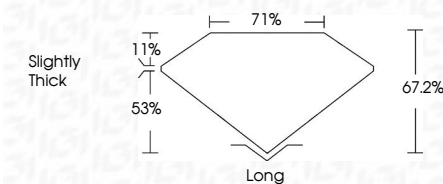
COLOR

D - F	G - J	K - M	N - R	S - Z	FANCY
Colorless	Near Colorless	Slightly Tinted	Very Light Color	Light Color	

CLARITY

FL	IF	VVS 1-2	VS 1-2	SI 1-2	I 1-3
Flawless	Internally Flawless	Very Very Slightly Included	Very Slightly Included	Slightly Included	Included

January 15, 2026
 IGI Report Number
 Description **NATURAL DIAMOND**
 Shape and Cutting Style **EMERALD CUT**
 Measurements **8.74 X 5.95 X 4.00 MM**
GRADING RESULTS
 Carat Weight **2.00 CARATS**
 Color Grade **J**
 Clarity Grade **VS 2**
 Cut Grade **VERY GOOD**



ADDITIONAL GRADING INFORMATION

Polish **EXCELLENT**
 Symmetry **EXCELLENT**
 Fluorescence **SLIGHT**
 Inscription(s)



IGI

January 15, 2026
 IGI Report No
EMERALD CUT
 8.74 X 5.95 X 4.00 MM
 Carat Weight **2.00 CARATS**
 Color Grade **J**
 Clarity Grade **VS 2**
 Cut Grade **VERY GOOD**
 Depth **67.2%**
 Table **71%**
 Girdle **Slightly Thick**
 Culet **Long**
 Polish **EXCELLENT**
 Symmetry **EXCELLENT**
 Fluorescence **SLIGHT**
 Inscription(s)