



Report verification at igi.org

ELECTRONIC COPY

DIAMOND REPORT

November 6, 2025
 IGI Report Number
 Description **NATURAL DIAMOND**
 Shape and Cutting Style **EMERALD CUT**
 Measurements **7.11 X 5.37 X 3.86 MM**

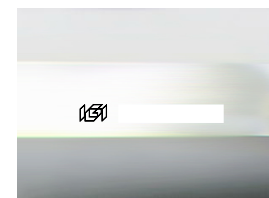
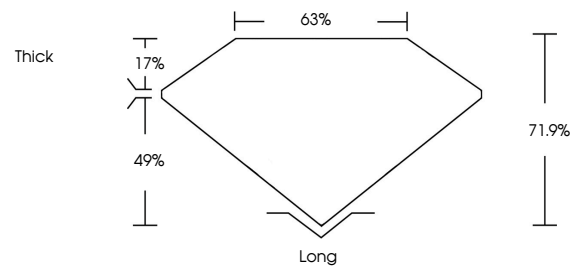
GRADING RESULTS

Carat Weight **1.50 CARAT**
 Color Grade **J**
 Clarity Grade **VVS 1**
 Cut Grade **VERY GOOD**

ADDITIONAL GRADING INFORMATION

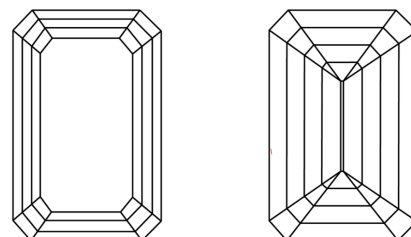
Polish **EXCELLENT**
 Symmetry **EXCELLENT**
 Fluorescence **NONE**
 Inscription(s)

PROPORTIONS



Sample Image Used

CLARITY CHARACTERISTICS



KEY TO SYMBOLS

Red symbols indicate internal characteristics.
 Green symbols indicate external characteristics.

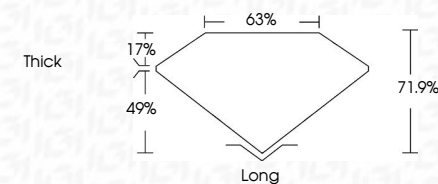
COLOR

D - F	G - J	K - M	N - R	S - Z	FANCY
Colorless	Near Colorless	Slightly Tinted	Very Light Color	Light Color	

CLARITY

IF	VVS ¹⁻²	VS ¹⁻²	SI ¹⁻²	I ¹⁻³
Internally Flawless	Very Very Slightly Included	Very Slightly Included	Slightly Included	Included

November 6, 2025
 IGI Report Number
 Description **NATURAL DIAMOND**
 Shape and Cutting Style **EMERALD CUT**
 Measurements **7.11 X 5.37 X 3.86 MM**
GRADING RESULTS
 Carat Weight **1.50 CARAT**
 Color Grade **J**
 Clarity Grade **VVS 1**
 Cut Grade **VERY GOOD**



ADDITIONAL GRADING INFORMATION

Polish **EXCELLENT**
 Symmetry **EXCELLENT**
 Fluorescence **NONE**
 Inscription(s)



IGI

November 6, 2025	1.50 CARAT	J	VVS 1	71.9%	63%	Thick	Long
IGI Report No	7.11 X 5.37 X 3.86 MM	EMERALD CUT	VERY GOOD	EXCELLENT	EXCELLENT	EXCELLENT	NONE
Carat Weight	Color Grade	Clarity Grade	Cut Grade	Depth	Table	Graile	Culet
Polish	Symmetry	Fluorescence	Inscriptions(s)				