



# INTERNATIONAL GEMOLOGICAL INSTITUTE

## LABORATORY GROWN DIAMOND REPORT

September 27, 2024

IGI Report Number

Description

Shape and Cutting Style

Measurements

LABORATORY GROWN DIAMOND

ROUND BRILLIANT

5.69 - 5.73 X 3.54 MM

### GRADING RESULTS

Carat Weight

Color Grade

Clarity Grade

Cut Grade

0.71 CARAT

H

VS 1

EXCELLENT

### ADDITIONAL GRADING INFORMATION

Polish

Symmetry

Fluorescence

Inscription(s)

EXCELLENT

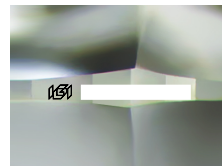
EXCELLENT

NONE

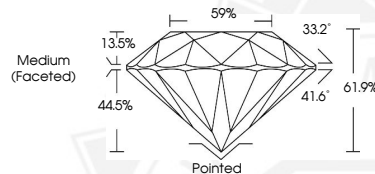


Comments: As Grown - No indication of post-growth treatment. This Laboratory Grown Diamond was created by High Pressure High Temperature (HPHT) growth process. Type II Faint Blue

ELECTRONIC COPY



Sample Image Used



September 27, 2024

IGI Report Number

ROUND BRILLIANT

LABORATORY GROWN DIAMOND

5.69 - 5.73 X 3.54 MM

Carat Weight 0.71 CARAT

Color Grade H

Clarity Grade VS 1

Cut Grade EXCELLENT

Polish EXCELLENT

Symmetry EXCELLENT

Fluorescence NONE

Inscription(s)

Comments: As Grown - No

indication of post-growth

treatment. This Laboratory Grown

Diamond was created by High

Pressure High Temperature (HPHT)

growth process. Type II Faint Blue

September 27, 2024

IGI Report Number

ROUND BRILLIANT

LABORATORY GROWN DIAMOND

5.69 - 5.73 X 3.54 MM

Carat Weight 0.71 CARAT

Color Grade H

Clarity Grade VS 1

Cut Grade EXCELLENT

Polish EXCELLENT

Symmetry EXCELLENT

Fluorescence NONE

Inscription(s)

Comments: As Grown - No

indication of post-growth

treatment. This Laboratory Grown

Diamond was created by High

Pressure High Temperature (HPHT)

growth process. Type II Faint Blue



THIS DOCUMENT WAS PRODUCED WITH THE FOLLOWING SECURITY MEASURES: SPECIAL DOCUMENT PAPER, INK SCREENS, WATERMARK, BACKGROUND DESIGN, HOLOGRAM AND OTHER SECURITY FEATURES NOT LISTED AND DO EXCEED DOCUMENT SECURITY INDUSTRY GUIDELINES.

For terms & conditions and to verify this report, please visit [www.igi.org](http://www.igi.org)