



**ELECTRONIC COPY**

Report verification at [igi.org](http://igi.org)

**LABORATORY GROWN DIAMOND REPORT**

April 14, 2026  
 IGI Report Number  
 Description **LABORATORY GROWN DIAMOND**  
 Shape and Cutting Style **MARQUISE BRILLIANT**  
 Measurements **15.12 X 8.42 X 5.47 MM**

**GRADING RESULTS**

Carat Weight **4.07 CARATS**  
 Color Grade **E**  
 Clarity Grade **VVS 2**

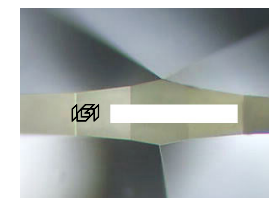
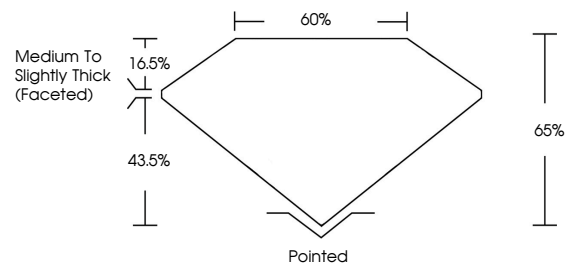
**ADDITIONAL GRADING INFORMATION**

Polish **EXCELLENT**  
 Symmetry **EXCELLENT**  
 Fluorescence **NONE**

Inscription(s)

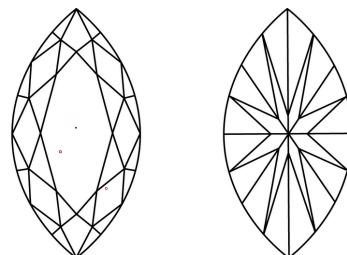
Comments: This Laboratory Grown Diamond was created by Chemical Vapor Deposition (CVD) growth process. Type IIa

**PROPORTIONS**



Sample Image Used

**CLARITY CHARACTERISTICS**



**KEY TO SYMBOLS**

Red symbols indicate internal characteristics.  
 Green symbols indicate external characteristics.

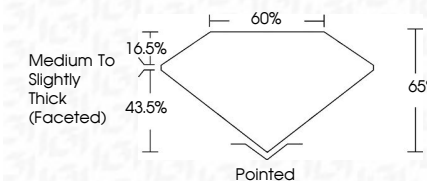
**COLOR**

D E F G H I J Faint Very Light Light

**CLARITY**

| FL       | IF                  | VVS <sup>1-2</sup>          | VS <sup>1-2</sup>      | SI <sup>1-2</sup> | I <sup>1-3</sup> |
|----------|---------------------|-----------------------------|------------------------|-------------------|------------------|
| Flawless | Internally Flawless | Very Very Slightly Included | Very Slightly Included | Slightly Included | Included         |

April 14, 2026  
 IGI Report Number  
 Description **LABORATORY GROWN DIAMOND**  
 Shape and Cutting Style **MARQUISE BRILLIANT**  
 Measurements **15.12 X 8.42 X 5.47 MM**  
**GRADING RESULTS**  
 Carat Weight **4.07 CARATS**  
 Color Grade **E**  
 Clarity Grade **VVS 2**



**ADDITIONAL GRADING INFORMATION**

Polish **EXCELLENT**  
 Symmetry **EXCELLENT**  
 Fluorescence **NONE**

Inscription(s)

Comments: This Laboratory Grown Diamond was created by Chemical Vapor Deposition (CVD) growth process. Type IIa



April 14, 2026  
 IGI Report No  
**MARQUISE BRILLIANT**  
 15.12 X 8.42 X 5.47 MM  
 Carat Weight  
 Color Grade  
 Clarity Grade  
 Depth  
 Table  
 Girdle  
**4.07 CARATS**  
**E**  
**VVS 2**  
**65%**  
**65%**  
**Medium to Slightly Thick (Faceted)**  
 Pointed  
 Culet  
 Polish  
 Symmetry  
 Fluorescence  
 Inscription(s)  
**EXCELLENT**  
**EXCELLENT**  
**NONE**

Comments: This Laboratory Grown Diamond was created by Chemical Vapor Deposition (CVD) growth process. Type IIa