



ELECTRONIC COPY

LABORATORY GROWN DIAMOND REPORT

July 24, 2025	
IGI Report Number	
Description	LABORATORY GROWN DIAMOND
Shape and Cutting Style	PEAR MODIFIED BRILLIANT
Measurements	10.49 X 6.41 X 3.64 MM

GRADING RESULTS

Carat Weight	1.62 CARAT
Color Grade	FANCY VIVID PINK
Clarity Grade	VVS 2

ADDITIONAL GRADING INFORMATION

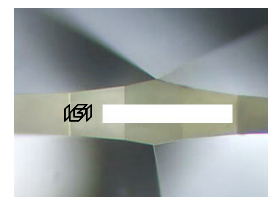
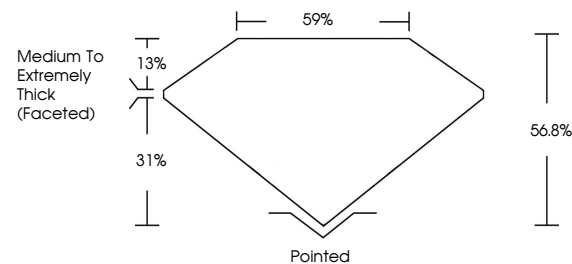
Polish	EXCELLENT
Symmetry	VERY GOOD
Fluorescence	STRONG

Inscription(s)

Comments: This Laboratory Grown Diamond was created by Chemical Vapor Deposition (CVD) growth process.
Indications of post-growth treatment.

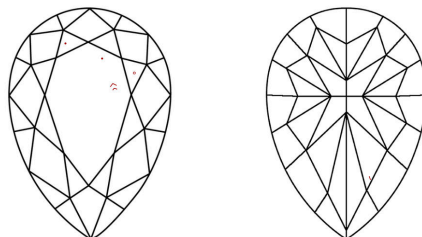
Report verification at igi.org

PROPORTIONS



Sample Image Used

CLARITY CHARACTERISTICS



KEY TO SYMBOLS

Red symbols indicate internal characteristics.
Green symbols indicate external characteristics.

COLOR

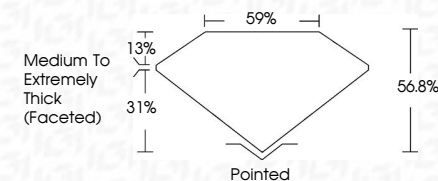
D E F G H I J Faint Very Light Light

CLARITY

IF	VS ¹⁻²	VS ¹⁻²	SI ¹⁻²	I ¹⁻³
Internally Flawless	Very Very Slightly Included	Very Slightly Included	Slightly Included	Included



July 24, 2025	
IGI Report Number	
Description	LABORATORY GROWN DIAMOND
Shape and Cutting Style	PEAR MODIFIED BRILLIANT
Measurements	10.49 X 6.41 X 3.64 MM
GRADING RESULTS	
Carat Weight	1.62 CARAT
Color Grade	FANCY VIVID PINK
Clarity Grade	VVS 2



ADDITIONAL GRADING INFORMATION

Polish	EXCELLENT
Symmetry	VERY GOOD
Fluorescence	STRONG
Inscription(s)	151

Comments: This Laboratory Grown Diamond was created by Chemical Vapor Deposition (CVD) growth process.
Indications of post-growth treatment.



July 24, 2025	Report No.	10.49 X 6.41 X 3.64 MM	Carat Weight	1.62 CARAT
	Report No.		Color Grade	FANCY VIVID PINK
	Report No.		Depth	VVS 2
	Report No.		Table	56.6%
	Report No.		Girdle	59%
	Report No.		Fluorescence	Medium to Extremely Thick (Focal)
	Report No.		Culet	Pointed
	Report No.		Symmetry	EXCELLENT
	Report No.		Fluorescence Description(s)	VERY GOOD
	Report No.			STRONG
	Report No.			(g)
	Comments:	The Laboratory Grown Diamond was created by Chemical Vapor Deposition (CVD) growth process. Indications of post-growth treatment.		

