



ELECTRONIC COPY

Report verification at igi.org



September 29, 2025

IGI Report Number

Description LABORATORY GROWN DIAMOND

Shape and Cutting Style PEAR BRILLIANT

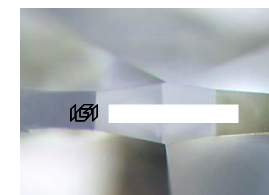
Measurements 10.16 X 6.46 X 3.99 MM

GRADING RESULTS

Carat Weight 1.57 CARAT

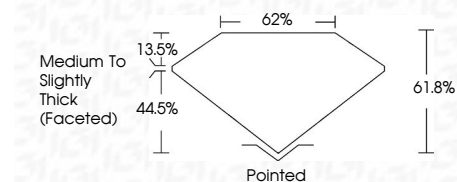
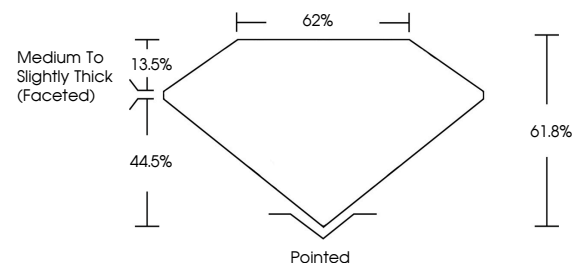
Color Grade D

Clarity Grade VS 2

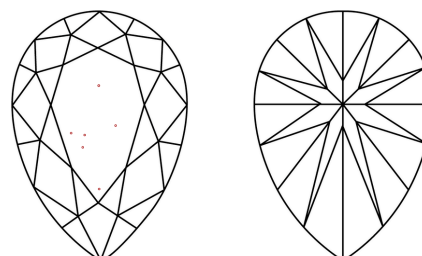


Sample Image Used

PROPORTIONS



CLARITY CHARACTERISTICS



KEY TO SYMBOLS

Red symbols indicate internal characteristics. Green symbols indicate external characteristics.

COLOR

D E F G H I J Faint Very Light Light

CLARITY

IF VS 1-2 VS 1-2 SI 1-2 I 1-3 Internally Flawless Very Very Slightly Included Very Slightly Included Slightly Included Included

ADDITIONAL GRADING INFORMATION

Polish EXCELLENT

Symmetry EXCELLENT

Fluorescence NONE

Inscription(s)

Comments: This Laboratory Grown Diamond was created by Chemical Vapor Deposition (CVD) growth process. Type IIa



IGI



Summary table with columns: September 29, 2025, IGI Report No, PEAR BRILLIANT, 10.16 X 6.46 X 3.99 MM, 1.57 CARAT, D, VS 2, 61.6%, 62%, Medium to Slightly Thick (Faceted), Pointed, EXCELLENT, EXCELLENT, NONE, IGI, Comments: This Laboratory Grown Diamond was created by Chemical Vapor Deposition (CVD) growth process. Type IIa