

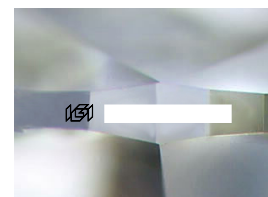
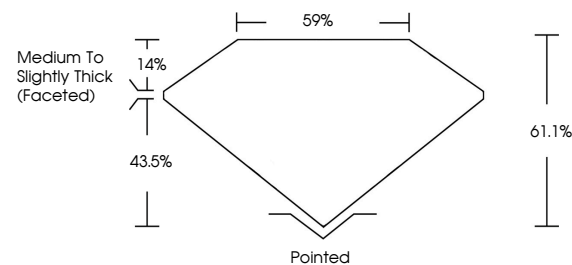


ELECTRONIC COPY

LABORATORY GROWN DIAMOND REPORT

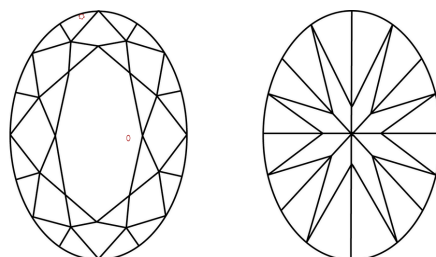
Report verification at igi.org

PROPORTIONS



Sample Image Used

CLARITY CHARACTERISTICS



KEY TO SYMBOLS

Red symbols indicate internal characteristics.
Green symbols indicate external characteristics.

COLOR

D E F G H I J Faint Very Light Light

CLARITY

IF VS¹⁻² VS¹⁻² S¹⁻² |¹⁻³

Internally Flawless	Very Very Slightly Included	Very Slightly Included	Slightly Included	Included
------------------------	--------------------------------	---------------------------	----------------------	----------

LABORATORY GROWN DIAMOND REPORT

June 13, 2025

IGI Report Number

Description **LABORATORY GROWN DIAMOND**Shape and Cutting Style **OVAL BRILLIANT**

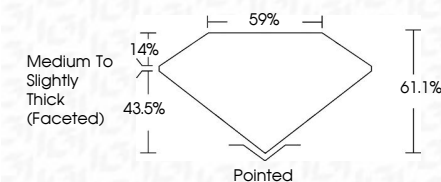
Measurements 10.43 X 7.30 X 4.46 MM

GRADING RESULTS

Carat Weight **2.09 CARATS**

Color Grade

Clarity Grade VS 2



ADDITIONAL GRADING INFORMATION

Polish **EXCELLENT**Symmetry **EXCELLENT**Fluorescence **NONE**Inscription(s)

Comments: This Laboratory Grown Diamond was created by Chemical Vapor Deposition (CVD) growth process.
Type IIa



June 13, 2025	Carat Weight	2.09 CARATS
GI Report No	Color Grade	E
1048 X 7.90 X 4.46 MM	Clarity Grade	VS 2
IDEAL BRILLIANT	Depth	61.1%
	Table	59%
	Grade	Medium to Slightly Thick (Faceted)
	Culet	Pointed
	Heel	EXCELLENT
	Symmetry	EXCELLENT
	Fluorescence	NONE
	Description(s)	fgj
Comments:		
The Laboratory Grown Diamond was created by Chemical Vapor Deposition (CVD) growth process.		
Type IIA		

