



ELECTRONIC COPY

Report verification at igi.org

LABORATORY GROWN DIAMOND REPORT

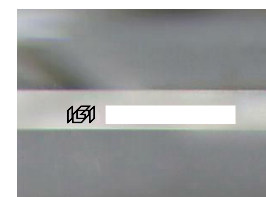
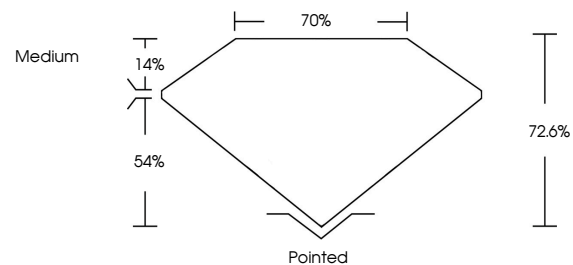
September 30, 2025
 IGI Report Number
 Description **LABORATORY GROWN DIAMOND**
 Shape and Cutting Style **PRINCESS CUT**
 Measurements **7.62 X 7.45 X 5.41 MM**
GRADING RESULTS
 Carat Weight **2.83 CARATS**
 Color Grade **D**
 Clarity Grade **VVS 1**

ADDITIONAL GRADING INFORMATION

Polish **EXCELLENT**
 Symmetry **EXCELLENT**
 Fluorescence **NONE**

Inscription(s) 
 Comments: This Laboratory Grown Diamond was created by Chemical Vapor Deposition (CVD) growth process.
 Type IIa

PROPORTIONS



Sample Image Used

COLOR

D E F G H I J Faint Very Light Light

CLARITY

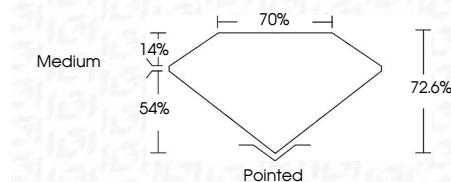
IF	VS ¹⁻²	VS ¹⁻²	SI ¹⁻²	I ¹⁻³
Internally Flawless	Very Very Slightly Included	Very Slightly Included	Slightly Included	Included

September 30, 2025
 IGI Report Number
 Description **LABORATORY GROWN DIAMOND**
 Shape and Cutting Style **PRINCESS CUT**
 Measurements **7.62 X 7.45 X 5.41 MM**
GRADING RESULTS
 Carat Weight **2.83 CARATS**
 Color Grade **D**
 Clarity Grade **VVS 1**

ADDITIONAL GRADING INFORMATION

Polish **EXCELLENT**
 Symmetry **EXCELLENT**
 Fluorescence **NONE**

Inscription(s) 
 Comments: This Laboratory Grown Diamond was created by Chemical Vapor Deposition (CVD) growth process.
 Type IIa



IGI



September 30, 2025
 IGI Report No
PRINCESS CUT
7.62 X 7.45 X 5.41 MM
 Carat Weight
 Color Grade
 Clarity Grade
 Table
 Girdle
 Culet
 Polish
 Symmetry
 Fluorescence
 Inscription(s)

2.83 CARATS
D
VVS 1
72.6%
70%
Medium
Pointed
EXCELLENT
EXCELLENT
NONE


Comments: This Laboratory Grown Diamond was created by Chemical Vapor Deposition (CVD) growth process.
 Type IIa