



ELECTRONIC COPY

Report verification at igi.org

LABORATORY GROWN DIAMOND REPORT

September 9, 2025
IGI Report Number
Description LABORATORY GROWN DIAMOND
Shape and Cutting Style TRIANGULAR MIXED CUT
Measurements 11.13 X 12.67 X 5.23 MM

GRADING RESULTS

Carat Weight 3.08 CARATS
Color Grade F
Clarity Grade VVS 1

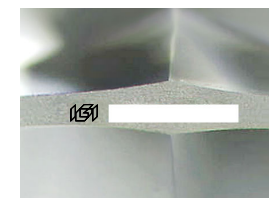
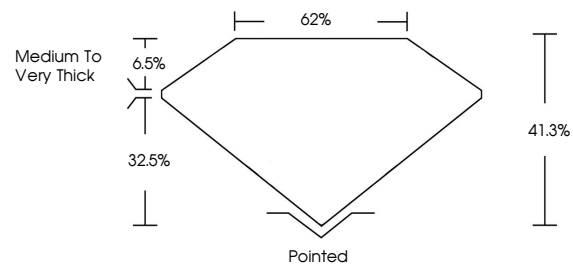
ADDITIONAL GRADING INFORMATION

Polish EXCELLENT
Symmetry EXCELLENT
Fluorescence NONE

Inscription(s) IGI

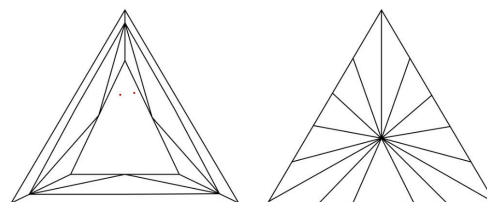
Comments: This Laboratory Grown Diamond was created by Chemical Vapor Deposition (CVD) growth process. Type IIa

PROPORTIONS



Sample Image Used

CLARITY CHARACTERISTICS



KEY TO SYMBOLS

Red symbols indicate internal characteristics.
Green symbols indicate external characteristics.

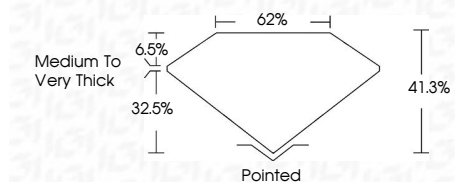
COLOR

D E F G H I J Faint Very Light Light

CLARITY

IF WS 1-2 VS 1-2 SI 1-2 I 1-3
Internally Flawless Very Very Slightly Included Very Slightly Included Slightly Included Included

September 9, 2025
IGI Report Number
Description LABORATORY GROWN DIAMOND
Shape and Cutting Style TRIANGULAR MIXED CUT
Measurements 11.13 X 12.67 X 5.23 MM
GRADING RESULTS
Carat Weight 3.08 CARATS
Color Grade F
Clarity Grade VVS 1



ADDITIONAL GRADING INFORMATION

Polish EXCELLENT
Symmetry EXCELLENT
Fluorescence NONE

Inscription(s) IGI
Comments: This Laboratory Grown Diamond was created by Chemical Vapor Deposition (CVD) growth process. Type IIa



Summary table of report details: September 9, 2025, IGI Report No. TRIANGULAR MIXED CUT, 3.08 CARATS, F, 11.13 X 12.67 X 5.23 MM, VVS 1, 41.0% table, 62% depth, Medium to Very Thick girdle, Pointed Culet, EXCELLENT Polish, EXCELLENT Symmetry, NONE Fluorescence, IGI Inscription(s).

Comments: This Laboratory Grown Diamond was created by Chemical Vapor Deposition (CVD) growth process. Type IIa