



ELECTRONIC COPY

Report verification at igi.org

DIAMOND REPORT

February 20, 2026
IGI Report Number
Description **NATURAL DIAMOND**
Shape and Cutting Style **CUT CORNERED RECTANGULAR MODIFIED BRILLIANT**
Measurements **7.59 X 5.75 X 3.87 MM**

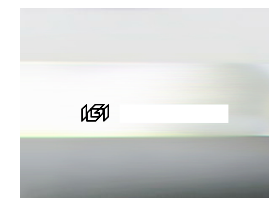
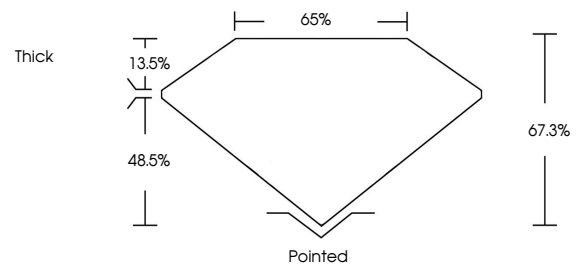
GRADING RESULTS

Carat Weight **1.52 CARAT**
Color Grade **G**
Clarity Grade **SI 1**
Cut Grade **VERY GOOD**

ADDITIONAL GRADING INFORMATION

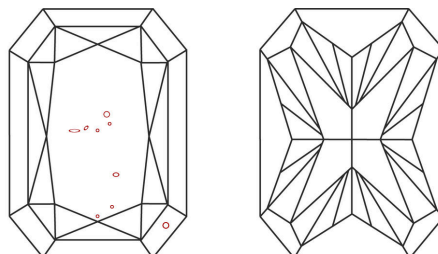
Polish **EXCELLENT**
Symmetry **EXCELLENT**
Fluorescence **STRONG**
Inscription(s)

PROPORTIONS



Sample Image Used

CLARITY CHARACTERISTICS



KEY TO SYMBOLS

Red symbols indicate internal characteristics.
Green symbols indicate external characteristics.

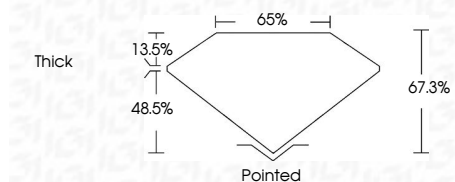
COLOR

D - F	G - J	K - M	N - R	S - Z	FANCY
Colorless	Near Colorless	Slightly Tinted	Very Light Color	Light Color	

CLARITY

FL	IF	VVS ¹⁻²	VS ¹⁻²	SI ¹⁻²	I ¹⁻³
Flawless	Internally Flawless	Very Very Slightly Included	Very Slightly Included	Slightly Included	Included

February 20, 2026
IGI Report Number
Description **NATURAL DIAMOND**
Shape and Cutting Style **CUT CORNERED RECTANGULAR MODIFIED BRILLIANT**
Measurements **7.59 X 5.75 X 3.87 MM**
GRADING RESULTS
Carat Weight **1.52 CARAT**
Color Grade **G**
Clarity Grade **SI 1**
Cut Grade **VERY GOOD**



ADDITIONAL GRADING INFORMATION

Polish **EXCELLENT**
Symmetry **EXCELLENT**
Fluorescence **STRONG**
Inscription(s)



IGI



February 20, 2026
IGI Report No
CUT CORNERED RECT. MODIFIED BRILLIANT
7.59 X 5.75 X 3.87 MM
Carat Weight **1.52 CARAT**
Color Grade **G**
Clarity Grade **SI 1**
Cut Grade **VERY GOOD**
Depth **67.3%**
Table **48.5%**
Girdle **65%**
Thick
Culet **Pointed**
Polish **EXCELLENT**
Symmetry **EXCELLENT**
Fluorescence **STRONG**
Inscriptions(s)