



**INTERNATIONAL
GEMOLOGICAL
INSTITUTE**

ELECTRONIC COPY

LABORATORY GROWN DIAMOND REPORT

June 24, 2026

IGI Report Number

Description

LABORATORY GROWN DIAMOND

Shape and Cutting Style

OVAL BRILLIANT

Measurements

6.70 X 4.38 X 2.69 MM

GRADING RESULTS

Carat Weight

0.50 CARAT

Color Grade

D

Clarity Grade

VS 2

ADDITIONAL GRADING INFORMATION

Polish

EXCELLENT

Symmetry

VERY GOOD

Fluorescence

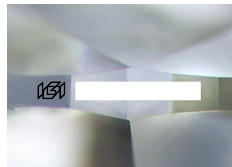
NONE

Inscription(s)

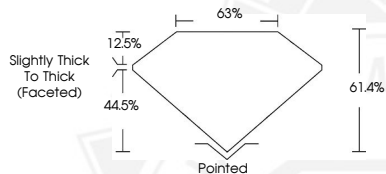


Comments: This Laboratory Grown Diamond was created by Chemical Vapor Deposition (CVD) growth process.

Type IIa



Sample Image Used



June 24, 2026

IGI Report Number

OVAL BRILLIANT

LABORATORY GROWN DIAMOND

6.70 X 4.38 X 2.69 MM

Carat Weight

0.50 CARAT

Color Grade

D

Clarity Grade

VS 2

Polish

EXCELLENT

Symmetry

VERY GOOD

Fluorescence

NONE

Inscription(s) Comments: This Laboratory Grown Diamond was created by Chemical Vapor Deposition (CVD) growth process. Type IIa

June 24, 2026

IGI Report Number

OVAL BRILLIANT

LABORATORY GROWN DIAMOND

6.70 X 4.38 X 2.69 MM

Carat Weight

0.50 CARAT

Color Grade

D

Clarity Grade

VS 2

Polish

EXCELLENT

Symmetry

VERY GOOD

Fluorescence

NONE

Inscription(s) Comments: This Laboratory Grown Diamond was created by Chemical Vapor Deposition (CVD) growth process. Type IIa



THIS DOCUMENT WAS PRODUCED WITH THE FOLLOWING SECURITY MEASURES: SPECIAL DOCUMENT PAPER, INK SCREENS, WATERMARK, BACKGROUND DESIGNS, HOLOGRAM AND OTHER SECURITY FEATURES NOT LISTED AND DO EXCEED DOCUMENT SECURITY INDUSTRY GUIDELINES.

For terms & conditions and to verify this report, please visit www.igi.org