



LABORATORY GROWN DIAMOND REPORT

October 28, 2025

IGI Report Number

Description

LABORATORY GROWN DIAMOND

Shape and Cutting Style

ROUND BRILLIANT

Measurements

2.89 - 2.92 X 1.78 MM

GRADING RESULTS

Carat Weight

0.09 CARAT

Color Grade

FANCY VIVID PINK

Clarity Grade

VS 1

Cut Grade

VERY GOOD

ADDITIONAL GRADING INFORMATION

Polish

VERY GOOD

Symmetry

GOOD

Fluorescence

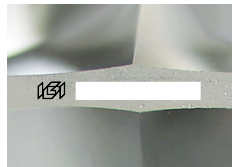
STRONG

Inscription(s)

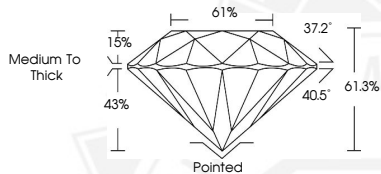


Comments: This Laboratory Grown Diamond was created by High Pressure High Temperature (HPHT) growth process.

Indications of post-growth treatment.



Sample Image Used



October 28, 2025

IGI Report Number

ROUND BRILLIANT

LABORATORY GROWN DIAMOND

2.89 - 2.92 X 1.78 MM

Carat Weight **0.09 CARAT**

Color Grade **FANCY VIVID PINK**

Clarity Grade **VS 1**

Cut Grade **VERY GOOD**

Polish **VERY GOOD**

Symmetry **GOOD**

Fluorescence **STRONG**

Inscription(s)

Comments: This Laboratory Grown Diamond was created by High Pressure High Temperature (HPHT) growth process. Indications of post-growth treatment.

October 28, 2025

IGI Report Number

ROUND BRILLIANT

LABORATORY GROWN DIAMOND

2.89 - 2.92 X 1.78 MM

Carat Weight **0.09 CARAT**

Color Grade **FANCY VIVID PINK**

Clarity Grade **VS 1**

Cut Grade **VERY GOOD**

Polish **VERY GOOD**

Symmetry **GOOD**

Fluorescence **STRONG**

Inscription(s)

Comments: This Laboratory Grown Diamond was created by High Pressure High Temperature (HPHT) growth process. Indications of post-growth treatment.



THIS DOCUMENT WAS PRODUCED WITH THE FOLLOWING SECURITY MEASURES: SPECIAL DOCUMENT PAPER, INK SCREENS, WATERMARK, BACKGROUND DESIGNS, HOLOGRAM AND OTHER SECURITY FEATURES NOT LISTED AND DO EXCEED DOCUMENT SECURITY INDUSTRY GUIDELINES.