



**LABORATORY GROWN DIAMOND REPORT**

January 20, 2026

IGI Report Number

Description

**LABORATORY GROWN DIAMOND**

Shape and Cutting Style

**OVAL BRILLIANT**

Measurements

**6.93 X 4.83 X 3.02 MM**

**GRADING RESULTS**

Carat Weight

**0.66 CARAT**

Color Grade

**E**

Clarity Grade

**VS 1**

**ADDITIONAL GRADING INFORMATION**

Polish

**VERY GOOD**

Symmetry

**VERY GOOD**

Fluorescence

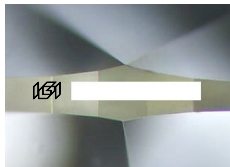
**NONE**

Inscription(s)

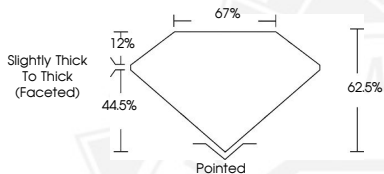


Comments: This Laboratory Grown Diamond was created by Chemical Vapor Deposition (CVD) growth process.

Type IIa



Sample Image Used



January 20, 2026

IGI Report Number

**OVAL BRILLIANT**

**LABORATORY GROWN DIAMOND**

**6.93 X 4.83 X 3.02 MM**

Carat Weight

**0.66 CARAT**

Color Grade

**E**

Clarity Grade

**VS 1**

Polish

**VERY GOOD**

Symmetry

**VERY GOOD**

Fluorescence

**NONE**

Inscription(s) Comments: This Laboratory Grown Diamond was created by Chemical Vapor Deposition (CVD) growth process. Type IIa

January 20, 2026

IGI Report Number

**OVAL BRILLIANT**

**LABORATORY GROWN DIAMOND**

**6.93 X 4.83 X 3.02 MM**

Carat Weight

**0.66 CARAT**

Color Grade

**E**

Clarity Grade

**VS 1**

Polish

**VERY GOOD**

Symmetry

**VERY GOOD**

Fluorescence

**NONE**

Inscription(s) Comments: This Laboratory Grown Diamond was created by Chemical Vapor Deposition (CVD) growth process. Type IIa



THIS DOCUMENT WAS PRODUCED WITH THE FOLLOWING SECURITY MEASURES: SPECIAL DOCUMENT PAPER, INK SCREENS, WATERMARK, BACKGROUND DESIGNS, HOLOGRAM AND OTHER SECURITY FEATURES NOT LISTED AND DO EXCEED DOCUMENT SECURITY INDUSTRY GUIDELINES.