



ELECTRONIC COPY

Report verification at igi.org

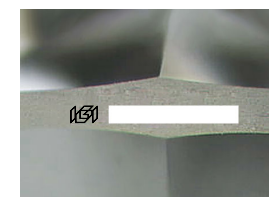
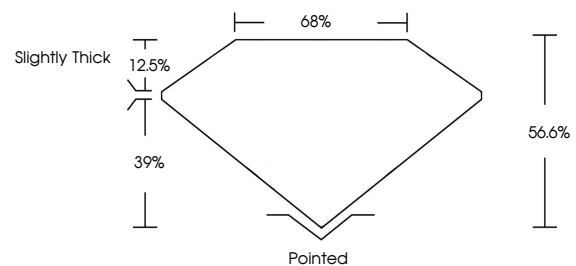
LABORATORY GROWN DIAMOND REPORT

March 8, 2025
 IGI Report Number
 Description **LABORATORY GROWN DIAMOND**
 Shape and Cutting Style **LOZENGE STEP CUT**
 Measurements **9.73 X 6.98 X 3.95 MM**
GRADING RESULTS
 Carat Weight **1.30 CARAT**
 Color Grade **FANCY INTENSE PINK**
 Clarity Grade **VS 2**

ADDITIONAL GRADING INFORMATION

Polish **EXCELLENT**
 Symmetry **EXCELLENT**
 Fluorescence **SLIGHT**
 Inscription(s) 
 Comments: This Laboratory Grown Diamond was created by Chemical Vapor Deposition (CVD) growth process.
 Indications of post-growth treatment.

PROPORTIONS



Sample Image Used

COLOR

D E F G H I J Faint Very Light Light

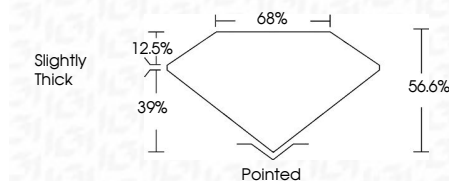
CLARITY

IF	VS ¹⁻²	VS ¹⁻²	SI ¹⁻²	I ¹⁻³
Internally Flawless	Very Very Slightly Included	Very Slightly Included	Slightly Included	Included

March 8, 2025
 IGI Report Number
 Description **LABORATORY GROWN DIAMOND**
 Shape and Cutting Style **LOZENGE STEP CUT**
 Measurements **9.73 X 6.98 X 3.95 MM**
GRADING RESULTS
 Carat Weight **1.30 CARAT**
 Color Grade **FANCY INTENSE PINK**
 Clarity Grade **VS 2**

ADDITIONAL GRADING INFORMATION

Polish **EXCELLENT**
 Symmetry **EXCELLENT**
 Fluorescence **SLIGHT**
 Inscription(s) 
 Comments: This Laboratory Grown Diamond was created by Chemical Vapor Deposition (CVD) growth process.
 Indications of post-growth treatment.



IGI

March 8, 2025
 IGI Report No
LOZENGE STEP CUT
1.30 CARAT
 Carat Weight
 Color Grade
FANCY INTENSE PINK
 Clarity Grade
VS 2
 Table
68%
 Girdle
39%
 Slightly Thick
 Culet
 Pointed
 Polish
EXCELLENT
 Symmetry
EXCELLENT
 Fluorescence
SLIGHT
 Inscription(s)


Comments: This Laboratory Grown Diamond was created by Chemical Vapor Deposition (CVD) growth process.
 Indications of post-growth treatment.