



ELECTRONIC COPY

Report verification at igi.org

DIAMOND REPORT

November 13, 2025
 IGI Report Number
 Description **NATURAL DIAMOND**
 Shape and Cutting Style **PEAR BRILLIANT**
 Measurements **8.03 X 5.47 X 3.61 MM**

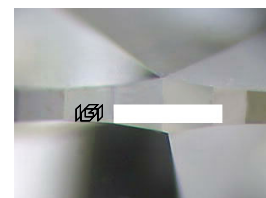
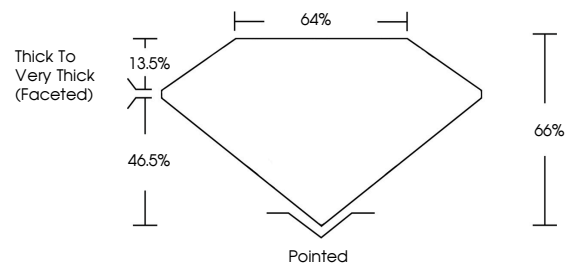
GRADING RESULTS

Carat Weight **1.00 CARAT**
 Color Grade **G**
 Clarity Grade **SI 2**
 Cut Grade **VERY GOOD**

ADDITIONAL GRADING INFORMATION

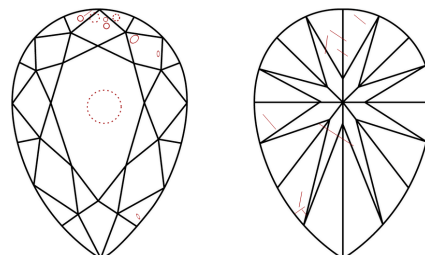
Polish **EXCELLENT**
 Symmetry **EXCELLENT**
 Fluorescence **NONE**
 Inscription(s)

PROPORTIONS



Sample Image Used

CLARITY CHARACTERISTICS



KEY TO SYMBOLS

Red symbols indicate internal characteristics.
 Green symbols indicate external characteristics.

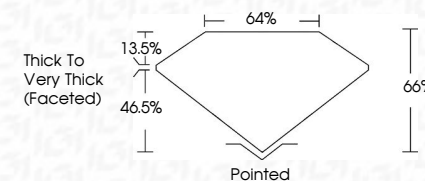
COLOR

D - F	G - J	K - M	N - R	S - Z	FANCY
Colorless	Near Colorless	Slightly Tinted	Very Light Color	Light Color	

CLARITY

IF	VVS ¹⁻²	VS ¹⁻²	SI ¹⁻²	I ¹⁻³
Internally Flawless	Very Very Slightly Included	Very Slightly Included	Slightly Included	Included

November 13, 2025
 IGI Report Number
 Description **NATURAL DIAMOND**
 Shape and Cutting Style **PEAR BRILLIANT**
 Measurements **8.03 X 5.47 X 3.61 MM**
GRADING RESULTS
 Carat Weight **1.00 CARAT**
 Color Grade **G**
 Clarity Grade **SI 2**
 Cut Grade **VERY GOOD**



ADDITIONAL GRADING INFORMATION

Polish **EXCELLENT**
 Symmetry **EXCELLENT**
 Fluorescence **NONE**
 Inscription(s)



IGI

November 13, 2025
 IGI Report No
PEAR BRILLIANT
 8.03 X 5.47 X 3.61 MM
 Carat Weight **1.00 CARAT**
 Color Grade **G**
 Clarity Grade **SI 2**
 Cut Grade **VERY GOOD**
 Depth **66%**
 Table **64%**
 Girdle **Thick to Very Thick (Faceted)**
 Culet **Pointed**
 Polish **EXCELLENT**
 Symmetry **EXCELLENT**
 Fluorescence **NONE**
 Inscription(s)