



ELECTRONIC COPY

Report verification at igi.org

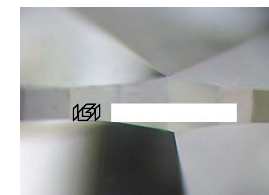
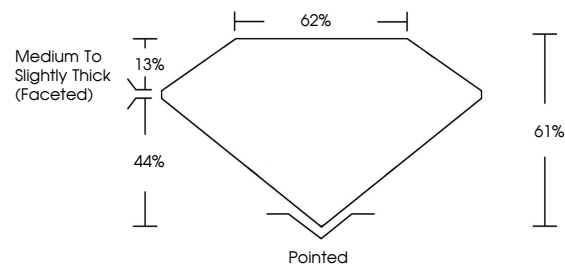
LABORATORY GROWN DIAMOND REPORT

February 28, 2026
 IGI Report Number
 Description **LABORATORY GROWN DIAMOND**
 Shape and Cutting Style **OVAL BRILLIANT**
 Measurements **10.43 X 7.05 X 4.30 MM**
GRADING RESULTS
 Carat Weight **2.02 CARATS**
 Color Grade **D**
 Clarity Grade **VS 2**

ADDITIONAL GRADING INFORMATION

Polish **EXCELLENT**
 Symmetry **VERY GOOD**
 Fluorescence **NONE**
 Inscription(s) 
 Comments: This Laboratory Grown Diamond was created by Chemical Vapor Deposition (CVD) growth process.
 Type IIa

PROPORTIONS



Sample Image Used

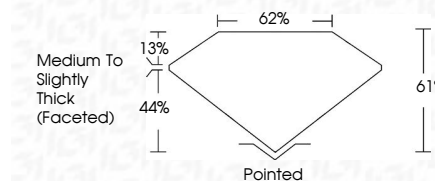
COLOR

D E F G H I J Faint Very Light Light

CLARITY

FL	IF	VS ¹⁻²	VS ¹⁻²	SI ¹⁻²	I ¹⁻³
Flawless	Internally Flawless	Very Very Slightly Included	Very Slightly Included	Slightly Included	Included

February 28, 2026
 IGI Report Number
 Description **LABORATORY GROWN DIAMOND**
 Shape and Cutting Style **OVAL BRILLIANT**
 Measurements **10.43 X 7.05 X 4.30 MM**
GRADING RESULTS
 Carat Weight **2.02 CARATS**
 Color Grade **D**
 Clarity Grade **VS 2**



ADDITIONAL GRADING INFORMATION

Polish **EXCELLENT**
 Symmetry **VERY GOOD**
 Fluorescence **NONE**
 Inscription(s) 
 Comments: This Laboratory Grown Diamond was created by Chemical Vapor Deposition (CVD) growth process.
 Type IIa



February 28, 2026
 IGI Report No
OVAL BRILLIANT
 10.43 X 7.05 X 4.30 MM
 Carat Weight
 Color Grade
 Clarity Grade
 Table
 Depth
 Girdle
 Medium to Slightly Thick (Faceted)
 Pointed
 EXCELLENT
 VERY GOOD
 NONE
 IGI
 Comments: This Laboratory Grown Diamond was created by Chemical Vapor Deposition (CVD) growth process.
 Type IIa