



**INTERNATIONAL  
GEMOLOGICAL  
INSTITUTE**

**LABORATORY GROWN DIAMOND REPORT**

June 12, 2025  
 IGI Report Number  
 Description **LABORATORY GROWN DIAMOND**  
 Shape and Cutting Style **OVAL BRILLIANT**  
 Measurements **7.53 X 4.73 X 2.79 MM**

**GRADING RESULTS**

Carat Weight **0.63 CARAT**  
 Color Grade **E**  
 Clarity Grade **VS 2**

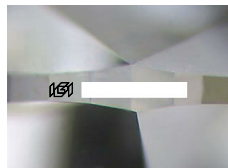
**ADDITIONAL GRADING INFORMATION**

Polish **VERY GOOD**  
 Symmetry **VERY GOOD**  
 Fluorescence **NONE**

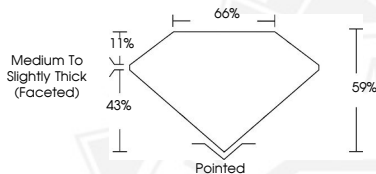
Inscription(s) 


Comments: This Laboratory Grown Diamond was created by  
 Chemical Vapor Deposition (CVD) growth process.  
 Type IIa

**ELECTRONIC COPY**




Sample Image Used



June 12, 2025  
 IGI Report Number  
**OVAL BRILLIANT**  
**LABORATORY GROWN DIAMOND**  
**7.53 X 4.73 X 2.79 MM**  
 Carat Weight **0.63 CARAT**  
 Color Grade **E**  
 Clarity Grade **VS 2**  
 Polish **VERY GOOD**  
 Symmetry **VERY GOOD**  
 Fluorescence **NONE**  
 Inscription(s) 

Comments: This Laboratory Grown Diamond was created by  
 Chemical Vapor Deposition (CVD)  
 growth process. Type IIa

June 12, 2025  
 IGI Report Number  
**OVAL BRILLIANT**  
**LABORATORY GROWN DIAMOND**  
**7.53 X 4.73 X 2.79 MM**  
 Carat Weight **0.63 CARAT**  
 Color Grade **E**  
 Clarity Grade **VS 2**  
 Polish **VERY GOOD**  
 Symmetry **VERY GOOD**  
 Fluorescence **NONE**  
 Inscription(s) 

Comments: This Laboratory Grown Diamond was created by  
 Chemical Vapor Deposition (CVD)  
 growth process. Type IIa



THIS DOCUMENT WAS PRODUCED WITH THE FOLLOWING SECURITY MEASURES: SPECIAL DOCUMENT PAPER, INK SCREENS, WATERMARK, BACKGROUND DESIGN, HOLOGRAM AND OTHER SECURITY FEATURES NOT LISTED AND DO EXCEED DOCUMENT SECURITY INDUSTRY GUIDELINES.

For terms & conditions and to verify this report, please visit [www.igi.org](http://www.igi.org)