



ELECTRONIC COPY

Report verification at igi.org

LABORATORY GROWN DIAMOND REPORT

April 10, 2026
 IGI Report Number
 Description **LABORATORY GROWN DIAMOND**
 Shape and Cutting Style **OVAL BRILLIANT**
 Measurements **17.03 X 8.52 X 5.37 MM**
GRADING RESULTS
 Carat Weight **5.03 CARATS**
 Color Grade **F**
 Clarity Grade **VVS 2**

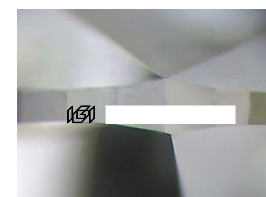
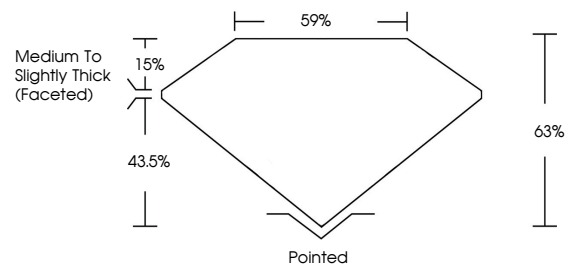
ADDITIONAL GRADING INFORMATION

Polish **EXCELLENT**
 Symmetry **EXCELLENT**
 Fluorescence **NONE**

Inscription(s)

Comments: This Laboratory Grown Diamond was created by Chemical Vapor Deposition (CVD) growth process.
 Type IIa

PROPORTIONS



Sample Image Used

April 10, 2026
 IGI Report Number
 Description **LABORATORY GROWN DIAMOND**
 Shape and Cutting Style **OVAL BRILLIANT**
 Measurements **17.03 X 8.52 X 5.37 MM**
GRADING RESULTS
 Carat Weight **5.03 CARATS**
 Color Grade **F**
 Clarity Grade **VVS 2**

ADDITIONAL GRADING INFORMATION

Polish **EXCELLENT**
 Symmetry **EXCELLENT**
 Fluorescence **NONE**

Inscription(s)

Comments: This Laboratory Grown Diamond was created by Chemical Vapor Deposition (CVD) growth process.
 Type IIa

COLOR

D E F G H I J Faint Very Light Light

CLARITY

FL	IF	VVS ¹⁻²	VS ¹⁻²	SI ¹⁻²	I ¹⁻³
Flawless	Internally Flawless	Very Very Slightly Included	Very Slightly Included	Slightly Included	Included



IGI



April 10, 2026	IGI Report No	5.03 CARATS	F
OVAL BRILLIANT	17.03 X 8.52 X 5.37 MM	VVS 2	63%
Carat Weight	Color Grade	Depth	59%
Clarity Grade	Table	Girdle	Medium to Slightly Thick (Faceted)
Polish	Culet	Symmetry	Pointed
Fluorescence	Inscription(s)		EXCELLENT
			NONE

Comments: This Laboratory Grown Diamond was created by Chemical Vapor Deposition (CVD) growth process.
 Type IIa