



ELECTRONIC COPY

Report verification at igi.org

LABORATORY GROWN DIAMOND REPORT

September 3, 2025
 IGI Report Number
 Description **LABORATORY GROWN DIAMOND**
 Shape and Cutting Style **OVAL BRILLIANT**
 Measurements **10.40 X 7.55 X 4.96 MM**

GRADING RESULTS

Carat Weight **2.54 CARATS**
 Color Grade **FANCY VIVID BLUE**
 Clarity Grade **VS 2**

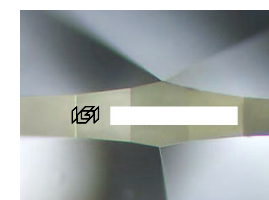
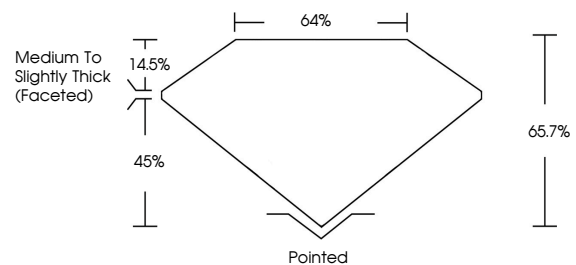
ADDITIONAL GRADING INFORMATION

Polish **EXCELLENT**
 Symmetry **EXCELLENT**
 Fluorescence **NONE**

Inscription(s)

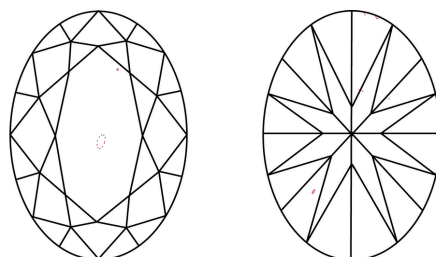
Comments: This Laboratory Grown Diamond was created by Chemical Vapor Deposition (CVD) growth process.
 Indications of post-growth treatment.

PROPORTIONS



Sample Image Used

CLARITY CHARACTERISTICS



KEY TO SYMBOLS

Red symbols indicate internal characteristics.
 Green symbols indicate external characteristics.

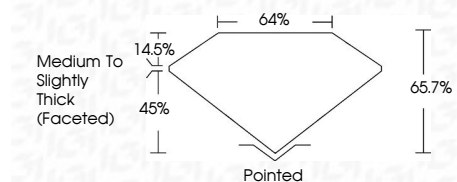
COLOR

D E F G H I J Faint Very Light Light

CLARITY

IF	VS ¹⁻²	VS ¹⁻²	SI ¹⁻²	I ¹⁻³
Internally Flawless	Very Very Slightly Included	Very Slightly Included	Slightly Included	Included

September 3, 2025
 IGI Report Number
 Description **LABORATORY GROWN DIAMOND**
 Shape and Cutting Style **OVAL BRILLIANT**
 Measurements **10.40 X 7.55 X 4.96 MM**
GRADING RESULTS
 Carat Weight **2.54 CARATS**
 Color Grade **FANCY VIVID BLUE**
 Clarity Grade **VS 2**



ADDITIONAL GRADING INFORMATION

Polish **EXCELLENT**
 Symmetry **EXCELLENT**
 Fluorescence **NONE**

Inscription(s)
 Comments: This Laboratory Grown Diamond was created by Chemical Vapor Deposition (CVD) growth process.
 Indications of post-growth treatment.



September 3, 2025
 IGI Report No
OVAL BRILLIANT
10.40 X 7.55 X 4.96 MM
 Carat Weight **2.54 CARATS**
 Color Grade **FANCY VIVID BLUE**
 Clarity Grade **VS 2**
 Table **64%**
 Depth **65.7%**
 Girdle **Medium to Slightly Thick (Faceted)**
 Culet **Pointed**
 Polish **EXCELLENT**
 Symmetry **EXCELLENT**
 Fluorescence **NONE**
 Inscription(s)

Comments: This Laboratory Grown Diamond was created by Chemical Vapor Deposition (CVD) growth process.
 Indications of post-growth treatment.