

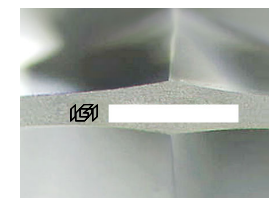
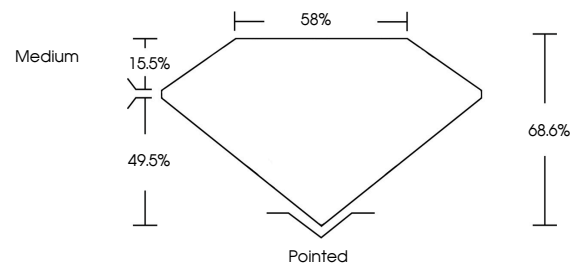


**ELECTRONIC COPY**

Report verification at [igi.org](http://igi.org)

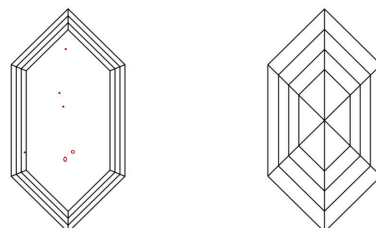
**LABORATORY GROWN DIAMOND REPORT**

**PROPORTIONS**



Sample Image Used

**CLARITY CHARACTERISTICS**



**KEY TO SYMBOLS**

Red symbols indicate internal characteristics.  
Green symbols indicate external characteristics.

**COLOR**

D E F G H I J Faint Very Light Light

**CLARITY**

IF	VS <sup>1-2</sup>	VS <sup>1-2</sup>	SI <sup>1-2</sup>	I <sup>1-3</sup>
Internally Flawless	Very Very Slightly Included	Very Slightly Included	Slightly Included	Included

September 5, 2025

IGI Report Number

Description **LABORATORY GROWN DIAMOND**

Shape and Cutting Style **HEXAGONAL MIXED CUT**

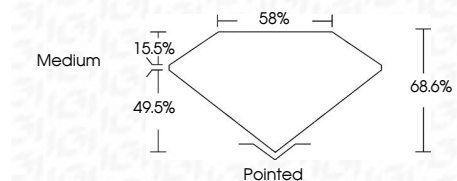
Measurements **12.10 X 6.11 X 4.19 MM**

**GRADING RESULTS**

Carat Weight **2.02 CARATS**

Color Grade **E**

Clarity Grade **VS 1**



**ADDITIONAL GRADING INFORMATION**

Polish **EXCELLENT**

Symmetry **EXCELLENT**

Fluorescence **NONE**

Inscription(s) **IGI**

Comments: This Laboratory Grown Diamond was created by Chemical Vapor Deposition (CVD) growth process.  
Type IIa

September 5, 2025

IGI Report Number

Description **LABORATORY GROWN DIAMOND**

Shape and Cutting Style **HEXAGONAL MIXED CUT**

Measurements **12.10 X 6.11 X 4.19 MM**

**GRADING RESULTS**

Carat Weight **2.02 CARATS**

Color Grade **E**

Clarity Grade **VS 1**

**ADDITIONAL GRADING INFORMATION**

Polish **EXCELLENT**

Symmetry **EXCELLENT**

Fluorescence **NONE**

Inscription(s) **IGI**

Comments: This Laboratory Grown Diamond was created by Chemical Vapor Deposition (CVD) growth process.  
Type IIa



**IGI**



September 5, 2025  
IGI Report No  
**HEXAGONAL MIXED CUT**  
12.10 X 6.11 X 4.19 MM  
Carat Weight  
2.02 CARATS  
Color Grade  
E  
Clarity Grade  
VS 1  
Table  
68.6%  
Depth  
58%  
Girdle  
Medium  
Culet  
Pointed  
Polish  
EXCELLENT  
Symmetry  
EXCELLENT  
Fluorescence  
NONE  
Inscription(s)  
IGI  
Comments: This Laboratory Grown Diamond was created by Chemical Vapor Deposition (CVD) growth process.  
Type IIa