



INTERNATIONAL GEMOLOGICAL INSTITUTE

LABORATORY GROWN DIAMOND REPORT

July 16, 2025
IGI Report Number
Description
Shape and Cutting Style
Measurements

LABORATORY GROWN DIAMOND
PEAR BRILLIANT
7.95 X 4.45 X 2.50 MM

GRADING RESULTS

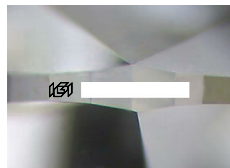
Carat Weight 0.53 CARAT
Color Grade D
Clarity Grade VS 1

ADDITIONAL GRADING INFORMATION

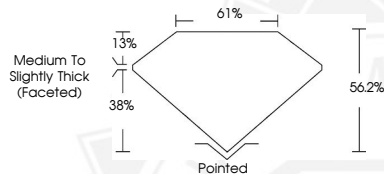
Polish VERY GOOD
Symmetry VERY GOOD
Fluorescence NONE


Inscription(s) 
Comments: This Laboratory Grown Diamond was created by
Chemical Vapor Deposition (CVD) growth process.
Type IIa


ELECTRONIC COPY



Sample Image Used



July 16, 2025
IGI Report Number
PEAR BRILLIANT
LABORATORY GROWN DIAMOND
7.95 X 4.45 X 2.50 MM
Carat Weight 0.53 CARAT
Color Grade D
Clarity Grade VS 1
Polish VERY GOOD
Symmetry VERY GOOD
Fluorescence NONE
Inscription(s) 
Comments: This Laboratory Grown
Diamond was created by
Chemical Vapor Deposition (CVD)
growth process. Type IIa

July 16, 2025
IGI Report Number
PEAR BRILLIANT
LABORATORY GROWN DIAMOND
7.95 X 4.45 X 2.50 MM
Carat Weight 0.53 CARAT
Color Grade D
Clarity Grade VS 1
Polish VERY GOOD
Symmetry VERY GOOD
Fluorescence NONE
Inscription(s) 
Comments: This Laboratory Grown
Diamond was created by
Chemical Vapor Deposition (CVD)
growth process. Type IIa



THIS DOCUMENT WAS PRODUCED WITH THE FOLLOWING SECURITY MEASURES: SPECIAL DOCUMENT PAPER, INK SCREENS, WATERMARK, BACKGROUND DESIGNS, HOLOGRAM AND OTHER SECURITY FEATURES NOT LISTED AND DO EXCEED DOCUMENT SECURITY INDUSTRY GUIDELINES.

For terms & conditions and to verify this report, please visit www.igi.org