



**ELECTRONIC COPY**

Report verification at [igi.org](http://igi.org)

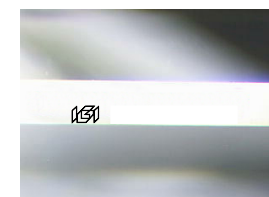
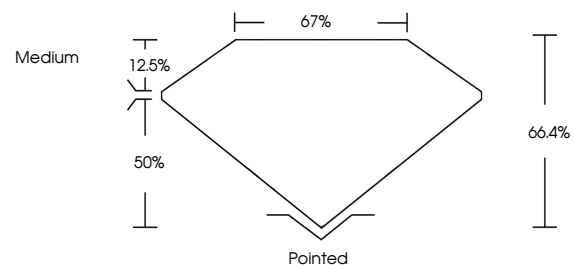
**LABORATORY GROWN DIAMOND REPORT**

June 11, 2025  
 IGI Report Number  
 Description **LABORATORY GROWN DIAMOND**  
 Shape and Cutting Style **SQUARE EMERALD CUT**  
 Measurements **8.30 X 8.28 X 5.50 MM**  
**GRADING RESULTS**  
 Carat Weight **3.50 CARATS**  
 Color Grade **FANCY INTENSE BROWNISH ORANGE**  
 Clarity Grade **VS 1**

**ADDITIONAL GRADING INFORMATION**

Polish **EXCELLENT**  
 Symmetry **EXCELLENT**  
 Fluorescence **STRONG**  
 Inscription(s)   
 Comments: This Laboratory Grown Diamond was created by Chemical Vapor Deposition (CVD) growth process. Indications of post-growth treatment.

**PROPORTIONS**



Sample Image Used

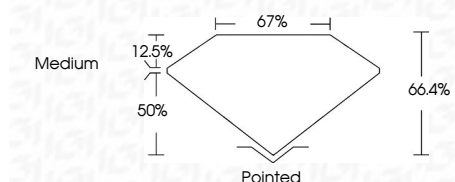
**COLOR**

D E F G H I J Faint Very Light Light

**CLARITY**

IF	VS <sup>1-2</sup>	VS <sup>1-2</sup>	SI <sup>1-2</sup>	I <sup>1-3</sup>
Internally Flawless	Very Very Slightly Included	Very Slightly Included	Slightly Included	Included

June 11, 2025  
 IGI Report Number  
 Description **LABORATORY GROWN DIAMOND**  
 Shape and Cutting Style **SQUARE EMERALD CUT**  
 Measurements **8.30 X 8.28 X 5.50 MM**  
**GRADING RESULTS**  
 Carat Weight **3.50 CARATS**  
 Color Grade **FANCY INTENSE BROWNISH ORANGE**  
 Clarity Grade **VS 1**



**ADDITIONAL GRADING INFORMATION**

Polish **EXCELLENT**  
 Symmetry **EXCELLENT**  
 Fluorescence **STRONG**  
 Inscription(s)   
 Comments: This Laboratory Grown Diamond was created by Chemical Vapor Deposition (CVD) growth process. Indications of post-growth treatment.



June 11, 2025	IGI Report No	<b>SQUARE EMERALD CUT</b>
8.30 X 8.28 X 5.50 MM	Carat Weight	<b>3.50 CARATS</b>
	Color Grade	<b>FANCY INTENSE BROWNISH ORANGE</b>
	Clarity Grade	<b>VS 1</b>
	Table	<b>66.4%</b>
	Depth	<b>67%</b>
	Graile	<b>Medium</b>
	Culet	<b>Pointed</b>
	Polish	<b>EXCELLENT</b>
	Symmetry	<b>EXCELLENT</b>
	Fluorescence	<b>STRONG</b>
	Inscription(s)	

Comments: This Laboratory Grown Diamond was created by Chemical Vapor Deposition (CVD) growth process. Indications of post-growth treatment.