



**ELECTRONIC COPY**

Report verification at [igi.org](http://igi.org)

**DIAMOND REPORT**

July 11, 2025  
IGI Report Number  
Description **NATURAL DIAMOND**  
Shape and Cutting Style **PEAR BRILLIANT**  
Measurements **10.42 X 6.35 X 3.93 MM**

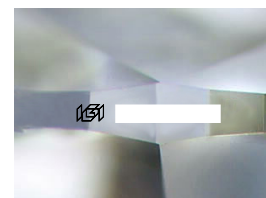
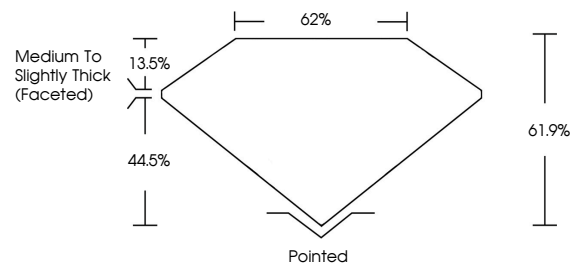
**GRADING RESULTS**

Carat Weight **1.51 CARAT**  
Color Grade **J**  
Clarity Grade **VS 1**  
Cut Grade **EXCELLENT**

**ADDITIONAL GRADING INFORMATION**

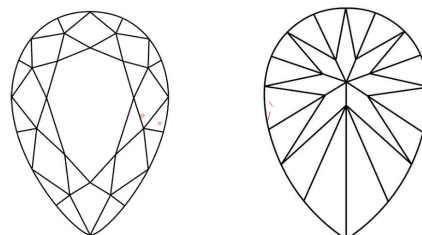
Polish **EXCELLENT**  
Symmetry **EXCELLENT**  
Fluorescence **VERY SLIGHT**  
Inscription(s)

**PROPORTIONS**



Sample Image Used

**CLARITY CHARACTERISTICS**



**KEY TO SYMBOLS**

Red symbols indicate internal characteristics.  
Green symbols indicate external characteristics.

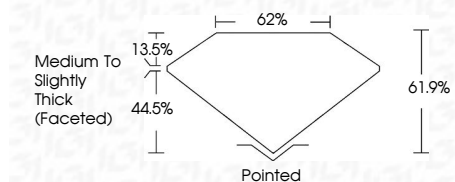
**COLOR**

D - F	G - J	K - M	N - R	S - Z	FANCY
Colorless	Near Colorless	Slightly Tinted	Very Light Color	Light Color	

**CLARITY**

IF	VVS <sup>1-2</sup>	VS <sup>1-2</sup>	SI <sup>1-2</sup>	I <sup>1-3</sup>
Internally Flawless	Very Very Slightly Included	Very Slightly Included	Slightly Included	Included

July 11, 2025  
IGI Report Number  
Description **NATURAL DIAMOND**  
Shape and Cutting Style **PEAR BRILLIANT**  
Measurements **10.42 X 6.35 X 3.93 MM**  
**GRADING RESULTS**  
Carat Weight **1.51 CARAT**  
Color Grade **J**  
Clarity Grade **VS 1**  
Cut Grade **EXCELLENT**



**ADDITIONAL GRADING INFORMATION**

Polish **EXCELLENT**  
Symmetry **EXCELLENT**  
Fluorescence **VERY SLIGHT**  
Inscription(s)



**IGI**



July 11, 2025  
IGI Report No  
**PEAR BRILLIANT**  
10.42 X 6.35 X 3.93 MM  
1.51 CARAT  
Color Grade **J**  
Clarity Grade **VS 1**  
Depth **61.9%**  
Table **62%**  
Girdle **Medium To Slightly Thick (Faceted)**  
Culet **Pointed**  
Polish **EXCELLENT**  
Symmetry **EXCELLENT**  
Fluorescence **VERY SLIGHT**  
Inscriptions(s)