



**ELECTRONIC COPY**

Report verification at [igi.org](http://igi.org)

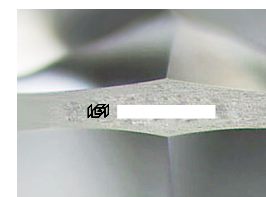
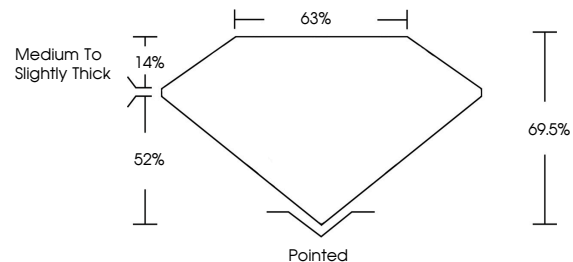
**LABORATORY GROWN DIAMOND REPORT**

July 18, 2024  
 IGI Report Number  
 Description **LABORATORY GROWN DIAMOND**  
 Shape and Cutting Style **HEXAGONAL MODIFIED BRILLIANT**  
 Measurements **8.75 X 7.24 X 5.03 MM**  
**GRADING RESULTS**  
 Carat Weight **2.09 CARATS**  
 Color Grade **FANCY VIVID BLUE**  
 Clarity Grade **VS 1**

**ADDITIONAL GRADING INFORMATION**

Polish **EXCELLENT**  
 Symmetry **EXCELLENT**  
 Fluorescence **NONE**  
 Inscription(s)   
 Comments: This Laboratory Grown Diamond was created by Chemical Vapor Deposition (CVD) growth process. Indications of post-growth treatment.

**PROPORTIONS**



Sample Image Used

**COLOR**

D E F G H I J Faint Very Light Light

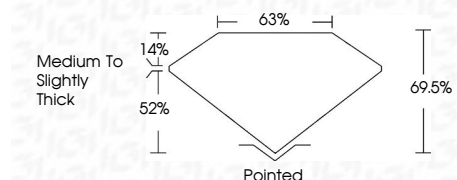
**CLARITY**

IF	VS <sup>1-2</sup>	VS <sup>1-2</sup>	SI <sup>1-2</sup>	I <sup>1-3</sup>
Internally Flawless	Very Very Slightly Included	Very Slightly Included	Slightly Included	Included

July 18, 2024  
 IGI Report Number  
 Description **LABORATORY GROWN DIAMOND**  
 Shape and Cutting Style **HEXAGONAL MODIFIED BRILLIANT**  
 Measurements **8.75 X 7.24 X 5.03 MM**  
**GRADING RESULTS**  
 Carat Weight **2.09 CARATS**  
 Color Grade **FANCY VIVID BLUE**  
 Clarity Grade **VS 1**

**ADDITIONAL GRADING INFORMATION**

Polish **EXCELLENT**  
 Symmetry **EXCELLENT**  
 Fluorescence **NONE**  
 Inscription(s)   
 Comments: This Laboratory Grown Diamond was created by Chemical Vapor Deposition (CVD) growth process. Indications of post-growth treatment.



July 18, 2024  
 IGI Report No  
**HEXAGONAL MODIFIED BRILLIANT**  
 8.75 X 7.24 X 5.03 MM  
 Carat Weight **2.09 CARATS**  
 Color Grade **FANCY VIVID BLUE**  
 Clarity Grade **VS 1**  
 Table **63%**  
 Girdle **Medium to Slightly Thick**  
 Culet **Pointed**  
 Polish **EXCELLENT**  
 Symmetry **EXCELLENT**  
 Fluorescence **NONE**  
 Inscription(s)   
 Comments: This Laboratory Grown Diamond was created by Chemical Vapor Deposition (CVD) growth process. Indications of post-growth treatment.