



INTERNATIONAL GEMOLOGICAL INSTITUTE

DIAMOND REPORT

April 23, 2025

IGI Report Number

Description

Shape and Cutting Style

Measurements

NATURAL DIAMOND

ROUND BRILLIANT

5.06 - 5.09 X 3.21 MM

GRADING RESULTS

Carat Weight

Color Grade

Clarity Grade

Cut Grade

0.51 CARAT

H

VS 2

EXCELLENT

ADDITIONAL GRADING INFORMATION

Polish

Symmetry

Fluorescence

Identification Features

Inscription(s)

EXCELLENT

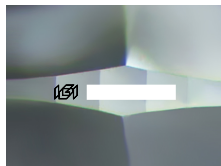
EXCELLENT

SLIGHT

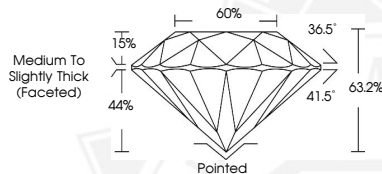
CLOUD, CRYSTAL

(IGI)

ELECTRONIC COPY



Sample Image Used



April 23, 2025

IGI Report Number

ROUND BRILLIANT

NATURAL DIAMOND

5.06 - 5.09 X 3.21 MM

Carat Weight **0.51 CARAT**

Color Grade **H**

Clarity Grade **VS 2**

Cut Grade **EXCELLENT**

Polish **EXCELLENT**

Symmetry **EXCELLENT**

Fluorescence **SLIGHT**

Inscription(s) **(IGI)**



April 23, 2025

IGI Report Number

ROUND BRILLIANT

NATURAL DIAMOND

5.06 - 5.09 X 3.21 MM

Carat Weight **0.51 CARAT**

Color Grade **H**

Clarity Grade **VS 2**

Cut Grade **EXCELLENT**

Polish **EXCELLENT**

Symmetry **EXCELLENT**

Fluorescence **SLIGHT**

Inscription(s) **(IGI)**



THIS DOCUMENT WAS PRODUCED WITH THE FOLLOWING SECURITY MEASURES: SPECIAL DOCUMENT PAPER, INK SCREENS, WATERMARK, BACKGROUND DESIGNS, HOLOGRAM AND OTHER SECURITY FEATURES NOT LISTED AND DO EXCEED DOCUMENT SECURITY INDUSTRY GUIDELINES.

For terms & conditions and to verify this report, please visit www.igi.org