



INTERNATIONAL GEMOLOGICAL INSTITUTE

ELECTRONIC COPY

LABORATORY GROWN DIAMOND REPORT

August 2, 2025

IGI Report Number

Description

Shape and Cutting Style

Measurements

LABORATORY GROWN DIAMOND

PEAR BRILLIANT

6.97 X 4.73 X 2.81 MM

GRADING RESULTS

Carat Weight

Color Grade

Clarity Grade

Cut Grade

0.53 CARAT

D

VS 1

EXCELLENT

ADDITIONAL GRADING INFORMATION

Polish

Symmetry

Fluorescence

Inscription(s)

EXCELLENT

EXCELLENT

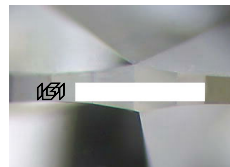
NONE



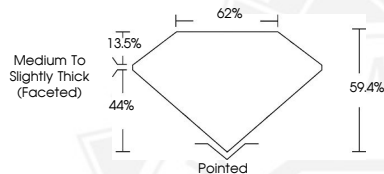
Comments: As Grown - No indication of post-growth treatment.

This Laboratory Grown Diamond was created by High Pressure High Temperature (HPHT) growth process.

Type II



Sample Image Used



August 2, 2025

IGI Report Number

PEAR BRILLIANT

LABORATORY GROWN DIAMOND

6.97 X 4.73 X 2.81 MM

Carat Weight 0.53 CARAT

Color Grade D

Clarity Grade VS 1

Cut Grade EXCELLENT

Polish EXCELLENT

Symmetry EXCELLENT

Fluorescence NONE

Inscription(s)

Comments: As Grown - No

indication of post-growth

treatment. This Laboratory Grown

Diamond was created by High

Pressure High Temperature (HPHT)

growth process. Type II

August 2, 2025

IGI Report Number

PEAR BRILLIANT

LABORATORY GROWN DIAMOND

6.97 X 4.73 X 2.81 MM

Carat Weight 0.53 CARAT

Color Grade D

Clarity Grade VS 1

Cut Grade EXCELLENT

Polish EXCELLENT

Symmetry EXCELLENT

Fluorescence NONE

Inscription(s)

Comments: As Grown - No

indication of post-growth

treatment. This Laboratory Grown

Diamond was created by High

Pressure High Temperature (HPHT)

growth process. Type II



THIS DOCUMENT WAS PRODUCED WITH THE FOLLOWING SECURITY MEASURES: SPECIAL DOCUMENT PAPER, INK SCREENS, WATERMARK, BACKGROUND DESIGNS, HOLOGRAM AND OTHER SECURITY FEATURES NOT LISTED AND DO EXCEED DOCUMENT SECURITY INDUSTRY GUIDELINES.

For terms & conditions and to verify this report, please visit www.igi.org