



**LABORATORY GROWN DIAMOND REPORT**

October 28, 2025

IGI Report Number

Description

**LABORATORY GROWN DIAMOND**

Shape and Cutting Style

**HALF MOON BRILLIANT**

Measurements

**7.83 X 4.88 X 3.07 MM**

**GRADING RESULTS**

Carat Weight

**0.71 CARAT**

Color Grade

**E**

Clarity Grade

**VVS 2**

**ADDITIONAL GRADING INFORMATION**

Polish

**VERY GOOD**

Symmetry

**VERY GOOD**

Fluorescence

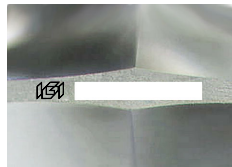
**NONE**

Inscription(s)

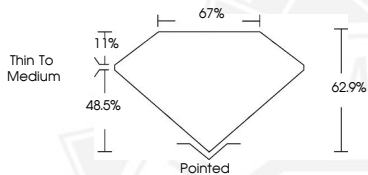


Comments: This Laboratory Grown Diamond was created by Chemical Vapor Deposition (CVD) growth process.

Type IIa



Sample Image Used



October 28, 2025

IGI Report Number

**HALF MOON BRILLIANT**

**LABORATORY GROWN DIAMOND**

**7.83 X 4.88 X 3.07 MM**

Carat Weight

**0.71 CARAT**

Color Grade

**E**

Clarity Grade

**VVS 2**

Polish

**VERY GOOD**

Symmetry

**VERY GOOD**

Fluorescence

**NONE**

Inscription(s)



Comments: This Laboratory Grown Diamond was created by Chemical Vapor Deposition (CVD) growth process. Type IIa

October 28, 2025

IGI Report Number

**HALF MOON BRILLIANT**

**LABORATORY GROWN DIAMOND**

**7.83 X 4.88 X 3.07 MM**

Carat Weight

**0.71 CARAT**

Color Grade

**E**

Clarity Grade

**VVS 2**

Polish

**VERY GOOD**

Symmetry

**VERY GOOD**

Fluorescence

**NONE**

Inscription(s)



Comments: This Laboratory Grown Diamond was created by Chemical Vapor Deposition (CVD) growth process. Type IIa



THIS DOCUMENT WAS PRODUCED WITH THE FOLLOWING SECURITY MEASURES: SPECIAL DOCUMENT PAPER, INK SCREENS, WATERMARK, BACKGROUND DESIGNS, HOLOGRAM AND OTHER SECURITY FEATURES NOT LISTED AND DO EXCEED DOCUMENT SECURITY INDUSTRY GUIDELINES.