

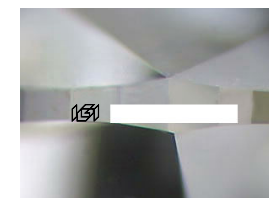
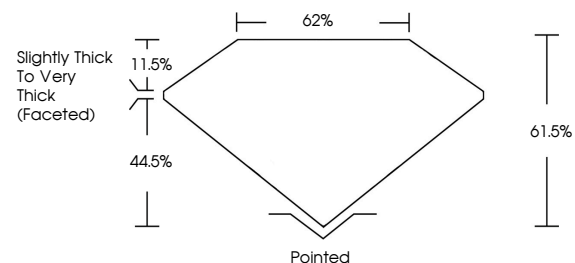


**ELECTRONIC COPY**

Report verification at [igi.org](http://igi.org)

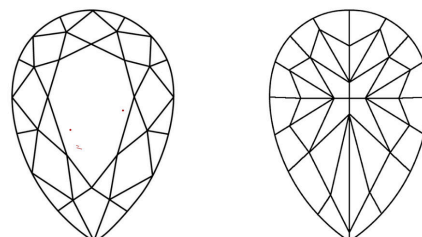
**LABORATORY GROWN DIAMOND REPORT**

**PROPORTIONS**



Sample Image Used

**CLARITY CHARACTERISTICS**



**KEY TO SYMBOLS**

Red symbols indicate internal characteristics.  
Green symbols indicate external characteristics.

**COLOR**

D E F G H I J Faint Very Light Light

**CLARITY**

FL	IF	VS <sup>1-2</sup>	VS <sup>1-2</sup>	SI <sup>1-2</sup>	I <sup>1-3</sup>
Flawless	Internally Flawless	Very Very Slightly Included	Very Slightly Included	Slightly Included	Included

November 18, 2025

IGI Report Number

Description **LABORATORY GROWN DIAMOND**

Shape and Cutting Style **PEAR MODIFIED BRILLIANT**

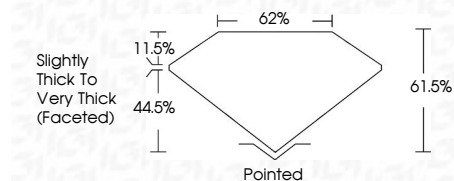
Measurements **11.13 X 6.44 X 3.96 MM**

**GRADING RESULTS**

Carat Weight **2.08 CARATS**

Color Grade **FANCY YELLOW**

Clarity Grade **VVS 2**



**ADDITIONAL GRADING INFORMATION**

Polish **EXCELLENT**

Symmetry **EXCELLENT**

Fluorescence **NONE**

Inscription(s)

Comments: This Laboratory Grown Diamond was created by Chemical Vapor Deposition (CVD) growth process.

November 18, 2025

IGI Report Number

Description **LABORATORY GROWN DIAMOND**

Shape and Cutting Style **PEAR MODIFIED BRILLIANT**

Measurements **11.13 X 6.44 X 3.96 MM**

**GRADING RESULTS**

Carat Weight **2.08 CARATS**

Color Grade **FANCY YELLOW**

Clarity Grade **VVS 2**

**ADDITIONAL GRADING INFORMATION**

Polish **EXCELLENT**

Symmetry **EXCELLENT**

Fluorescence **NONE**

Inscription(s)

Comments: This Laboratory Grown Diamond was created by Chemical Vapor Deposition (CVD) growth process.



**IGI**



© IGI 2020, International Gemological Institute

FD - 10 20

November 18, 2025	2.08 CARATS
IGI Report No	FANCY YELLOW
PEAR MODIFIED BRILLIANT	VVS 2
11.13 X 6.44 X 3.96 MM	61.0% 62%
Carat Weight	Slightly Thick To Very Thick (Faceted)
Color Grade	Pointed
Clarity Grade	EXCELLENT
Depth	EXCELLENT
Table	NONE
Girdle	Inscription(s)
Culet	
Polish	
Symmetry	
Fluorescence	
Inscription(s)	

Comments: This Laboratory Grown Diamond was created by Chemical Vapor Deposition (CVD) growth process.