



ELECTRONIC COPY

Report verification at igi.org

LABORATORY GROWN DIAMOND REPORT

May 21, 2025
IGI Report Number
Description LABORATORY GROWN DIAMOND
Shape and Cutting Style ROUND ROSE CUT
Measurements 7.17 - 7.24 X 2.20 MM

GRADING RESULTS

Carat Weight 1.23 CARAT
Color Grade F
Clarity Grade VS 1

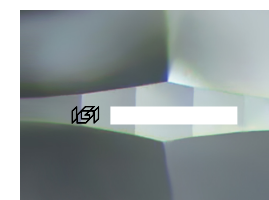
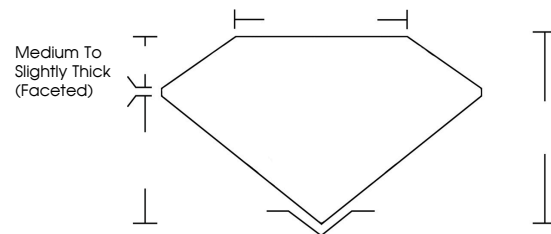
ADDITIONAL GRADING INFORMATION

Polish EXCELLENT
Symmetry EXCELLENT
Fluorescence NONE

Inscription(s) IGI

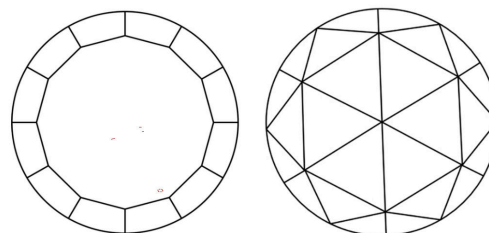
Comments: This Laboratory Grown Diamond was created by Chemical Vapor Deposition (CVD) growth process. Type IIa

PROPORTIONS



Sample Image Used

CLARITY CHARACTERISTICS



KEY TO SYMBOLS

Red symbols indicate internal characteristics.
Green symbols indicate external characteristics.

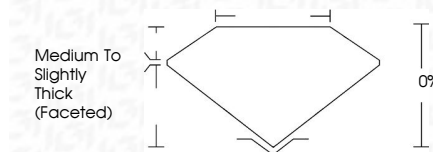
COLOR

D E F G H I J Faint Very Light Light

CLARITY

IF WS 1-2 VS 1-2 SI 1-2 I 1-3
Internally Flawless Very Very Slightly Included Very Slightly Included Slightly Included Included

May 21, 2025
IGI Report Number
Description LABORATORY GROWN DIAMOND
Shape and Cutting Style ROUND ROSE CUT
Measurements 7.17 - 7.24 X 2.20 MM
GRADING RESULTS
Carat Weight 1.23 CARAT
Color Grade F
Clarity Grade VS 1



ADDITIONAL GRADING INFORMATION

Polish EXCELLENT
Symmetry EXCELLENT
Fluorescence NONE

Inscription(s) IGI
Comments: This Laboratory Grown Diamond was created by Chemical Vapor Deposition (CVD) growth process. Type IIa



May 21, 2025
IGI Report No.
ROUND ROSE CUT
7.17 - 7.24 X 2.20 MM
1.23 CARAT
F
VS 1
0%
0%
Medium to Slightly Thick (Faceted)
EXCELLENT
EXCELLENT
NONE
IGI
Comments: This Laboratory Grown Diamond was created by Chemical Vapor Deposition (CVD) growth process. Type IIa